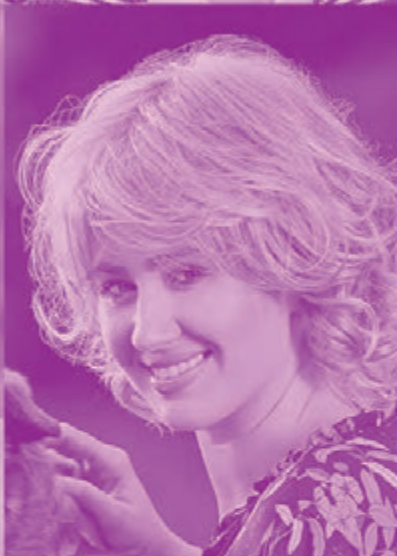
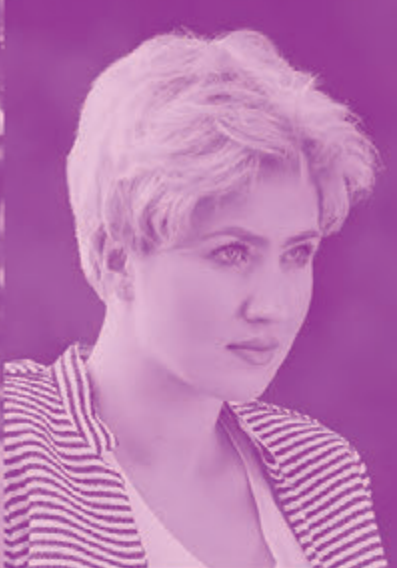


*Synthetic
wigs
Collection*

Hair **2be**



Our offer

Collection of synthetic hair wigs



Collection of natural slavic hair wigs -
World famous Queen of Nature

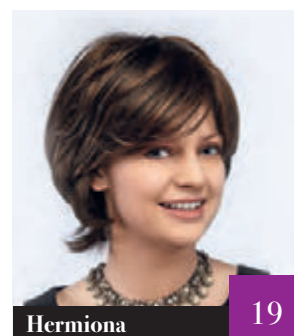
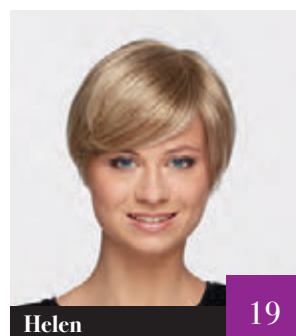
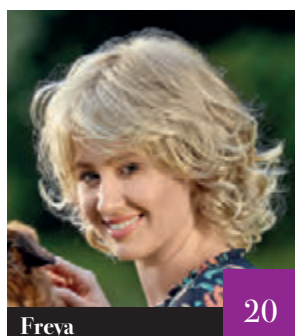
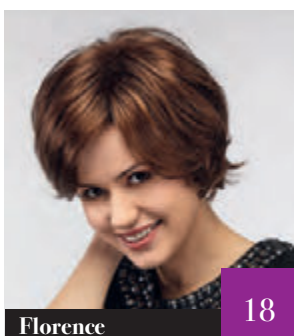
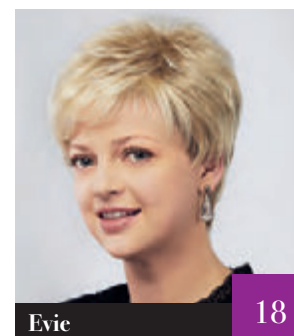
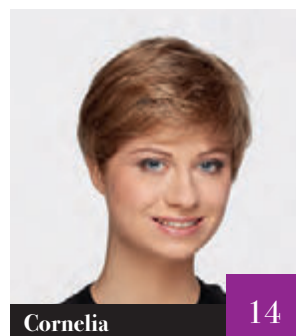
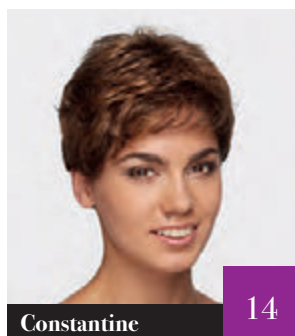
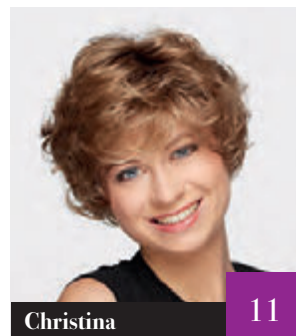
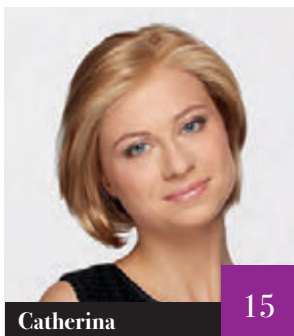
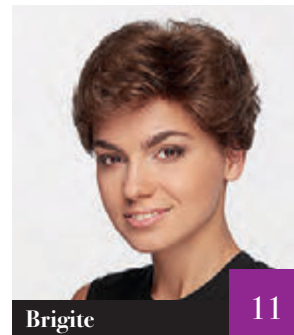
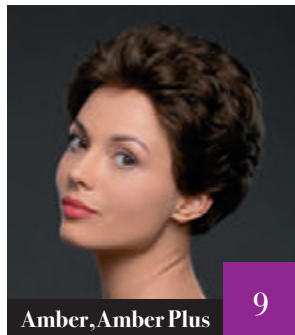
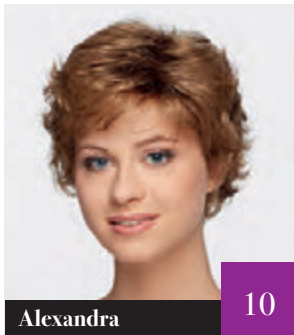


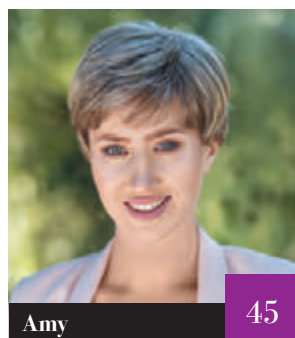
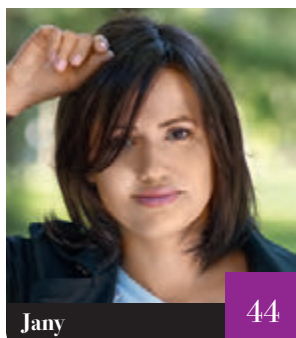
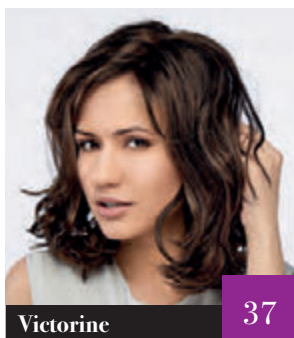
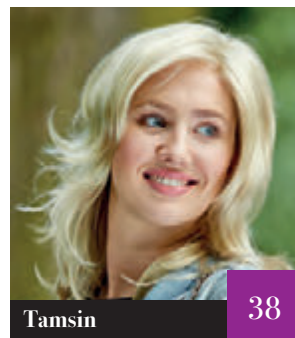
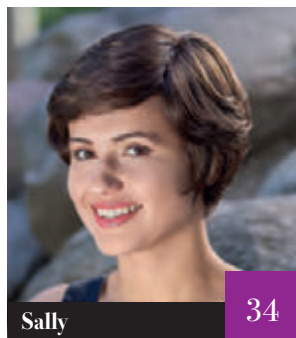
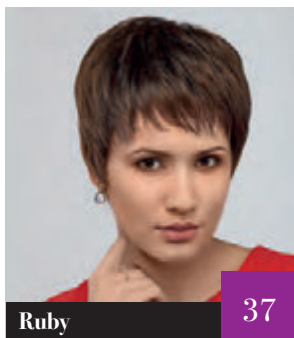
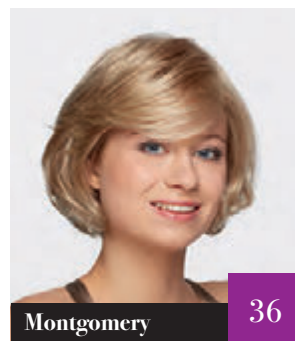
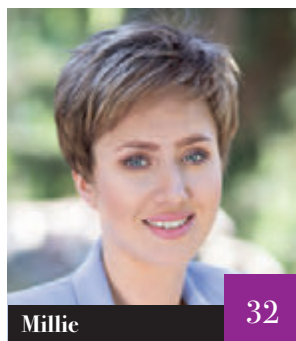
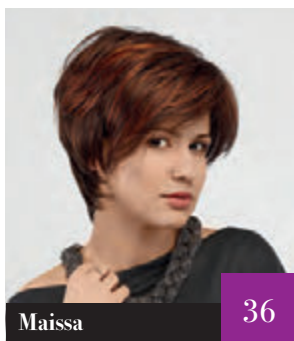
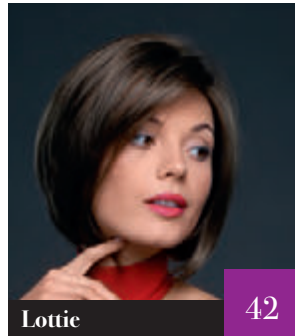
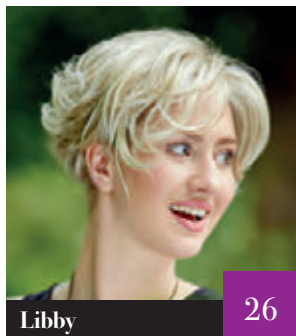
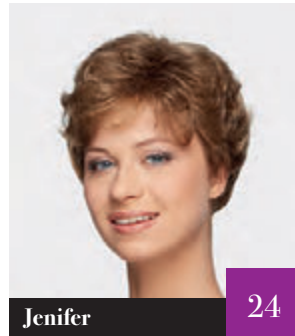
Collection of turbans



Cosmetics & Accessories

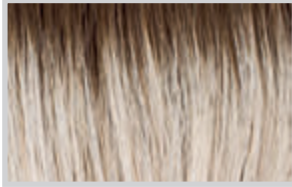
Models





Colours

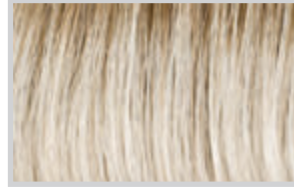
Blond



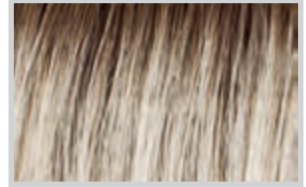
101/24/38R



24/25/23



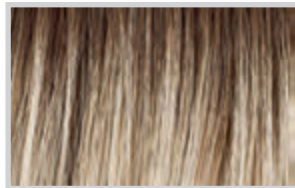
24/25/23/22R



24/25/23/12R



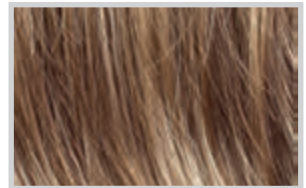
18/22/12



18/22/12/8R

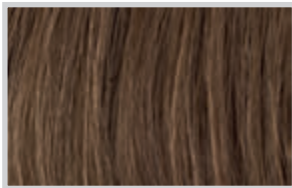


18/24/22

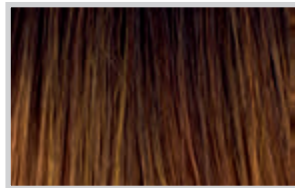


18/22

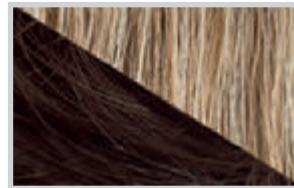
Browns



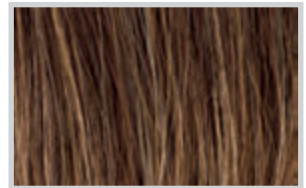
8/12/10



5/14/4R

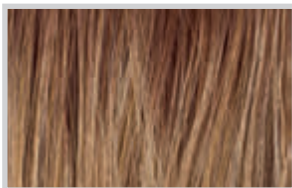


8/27

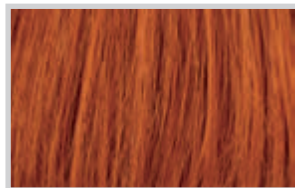


33/830

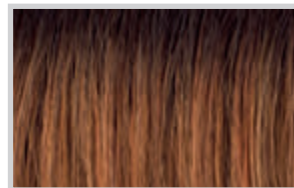
Reds



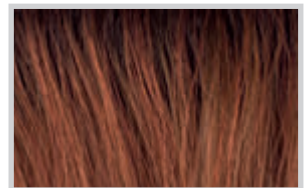
27/30/31R



23N

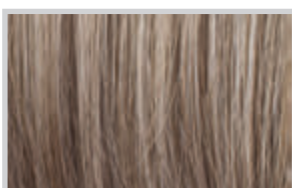


23N/28/30/30R



130/31/4R

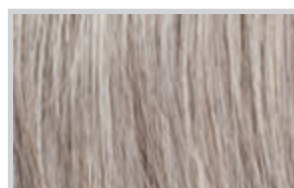
Greys



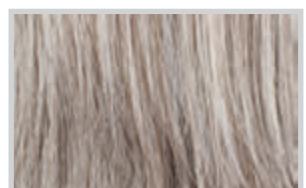
38/48/36



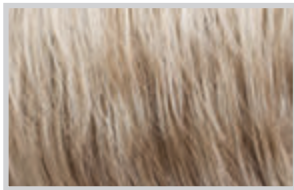
59



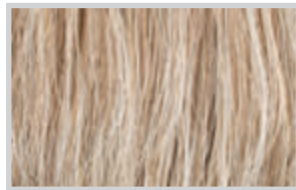
56



55N



22/16



26/25/22



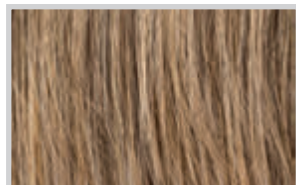
26/25/22/10R



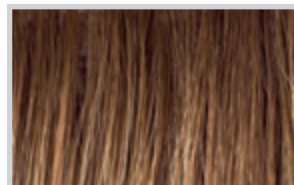
26/27/20



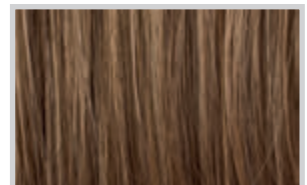
14/12/22



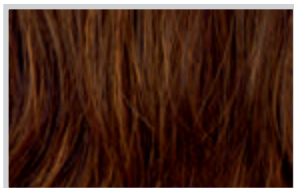
12/14/16



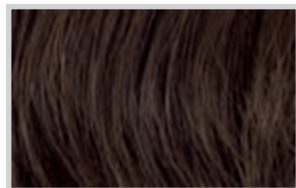
8/16/30R



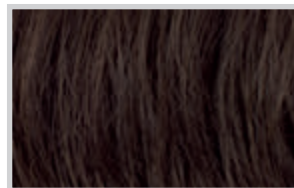
10/18/14



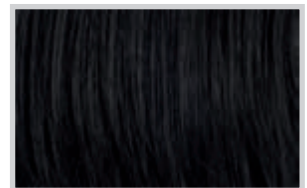
4/30/6R



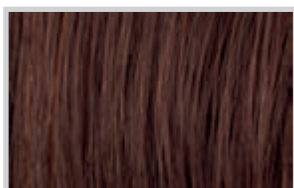
4/8



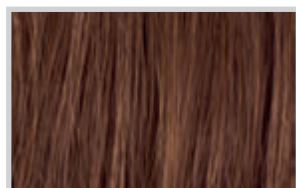
4/6



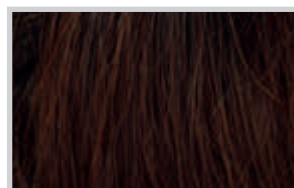
1



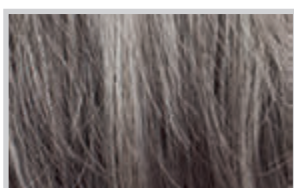
32/133H



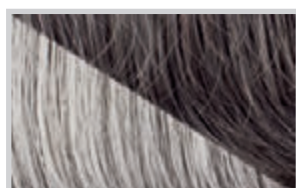
30/33



131/137/4R



51



92

Due to printing techniques, colors may vary from a real products.



Amber
plus



Amber

handmade

Colours:

26/25/22	26/27/20	14/12/22
12/14/16	30/33	8/12/10
4/30/6R	4/6	59
56		

Amber plus

handmade, lace front

Colours:

22/16	26/27/20	18/24/22
14/12/22	30/33	8/12/10
4/6	38/48/36	59
56		



Alexandra

wefted

Colours:

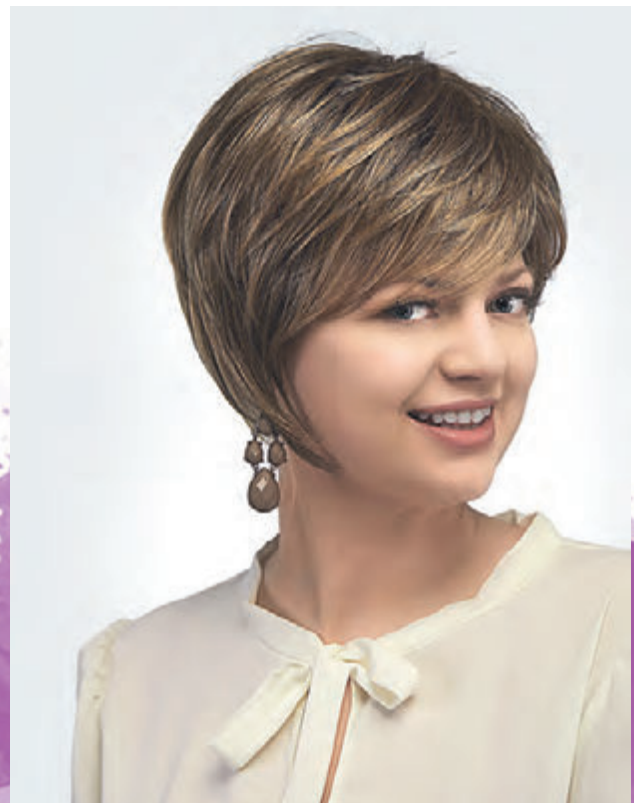
26/25/22	26/27/20	18/22/12
12/14/16	8/16/30R	27/30/31R
32/133H	30/33	131/137/4R
8/12/10	4/6	51

Arabella

mono crown

Colours:

24/25/23	24/25/23/12R	26/25/22
18/22/12	12/14/16	8/16/30R
130/31/4R	30/33	8/12/10
4/8		





Brigitte

wefted

Colours:

24/25/23	26/25/22	26/27/20
14/12/22	12/14/16	8/16/30R
30/33	8/12/10	4/8
59	56	51

Christina

wefted

Colours:

26/25/22	26/27/20	18/22/12
12/14/16	8/16/30R	8/12/10
4/30/6R	4/6	1
59	56	





Clementine



Clementine

mono top, lace front

Colours:

24/25/23	26/27/20	18/22/12	8/16/30R	30/33	8/12/10	33/830
4/6	59					



Constantine

wefted

Colours:

26/25/22	26/27/20	18/22/12
14/12/22	8/16/30R	130/31/4R
30/33	8/12/10	33/830
4/30/6R	4/6	59
56	51	

Cornelia

mono crown

Colours:

24/25/23	26/25/22	18/22/12
14/12/22	8/16/30R	130/31/4R
8/12/10	33/830	4/30/6R
4/6	59	56





Cerys

mono part, lace front

Colours:

24/25/23	26/27/20	18/22/12
12/14/16	8/16/30R	32/133H
130/31/4R	33/830	4/30/6R
1		

Catherina

mono part, lace front

Colours:

101/24/38R	24/25/23	24/25/23/12R
26/25/22	18/24/22	18/22
12/14/16	8/16/30R	10/18/14
23N	23N/28/30/30R	130/31/4R
33/830	4/6	1





Cloe



Cloe

wefted

Colours:

101/24/38R	26/25/22	26/25/22/10R	26/27/20	18/22/12	14/12/22	12/14/16
8/16/30R	27/30/31R	130/31/4R	32/133H	30/33	8/12/10	4/30/6R
4/8	38/48/36R	59	56	51		



Evie

wefted

Colours:

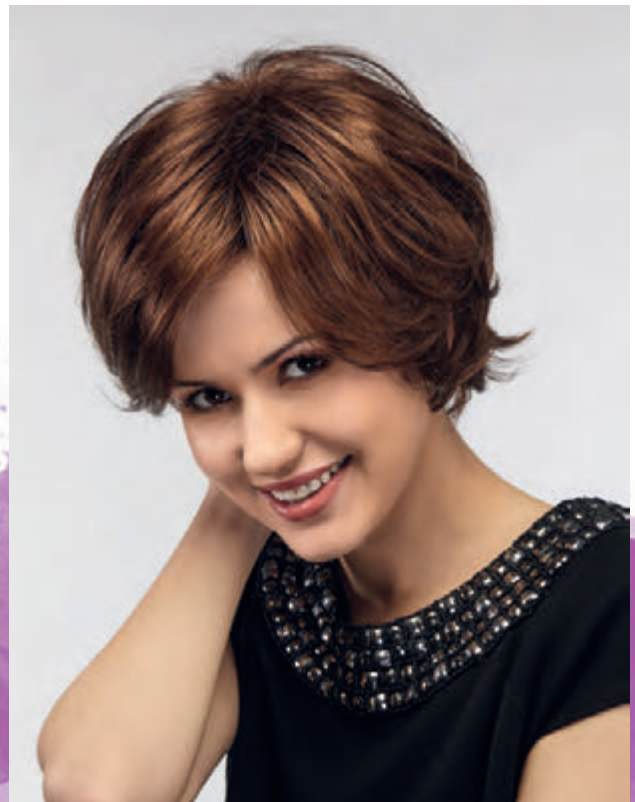
101/24/38R	24/25/23	22/16
26/27/20	18/22/12/8R	18/22
14/12/22	8/16/30R	32/133H
130/31/4R	8/12/10	4/6
59	92	

Florence

wefted

Colours:

24/25/23	24/25/23/12R	26/25/22
12/14/16	8/16/30 R	32/133H
130/31/4R	4/30/6R	4/6





Helen

mono part

Colours:

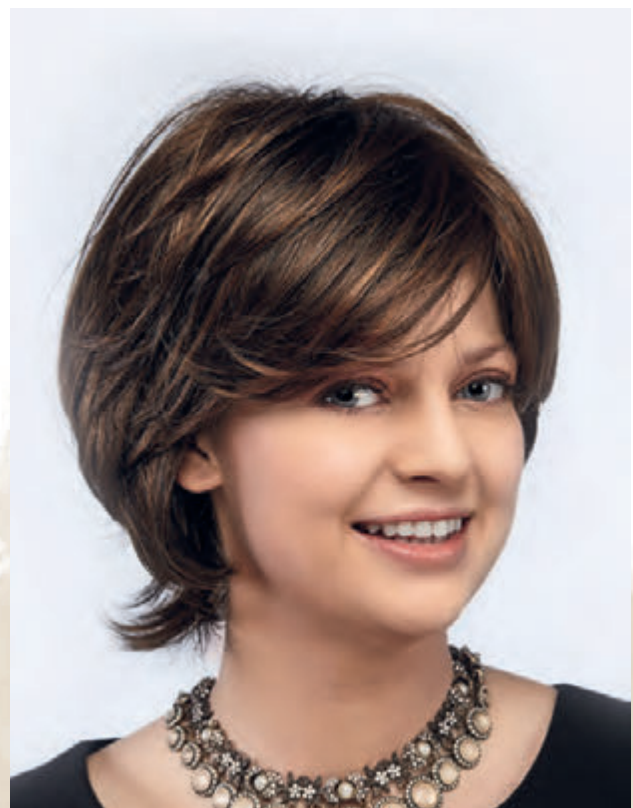
24/25/23	26/25/22	18/22/12
14/12/22	8/16/30R	130/31/4R
8/12/10	33/830	4/30/6R
4/6		

Hermiona

mono top

Colours:

24/25/23	26/25/22	12/14/16
8/16/30R	23 N	130/31/4 R
33/830	4/6	





Freyja



Freya

mono crown, lace front

Colours:

24/25/23	24/25/23/22R	R14/88H	8/16/30R	130/31/4 R	33/830	4/6
----------	--------------	---------	----------	------------	--------	-----



Honora

mono part, lace front

Colours:

22/16

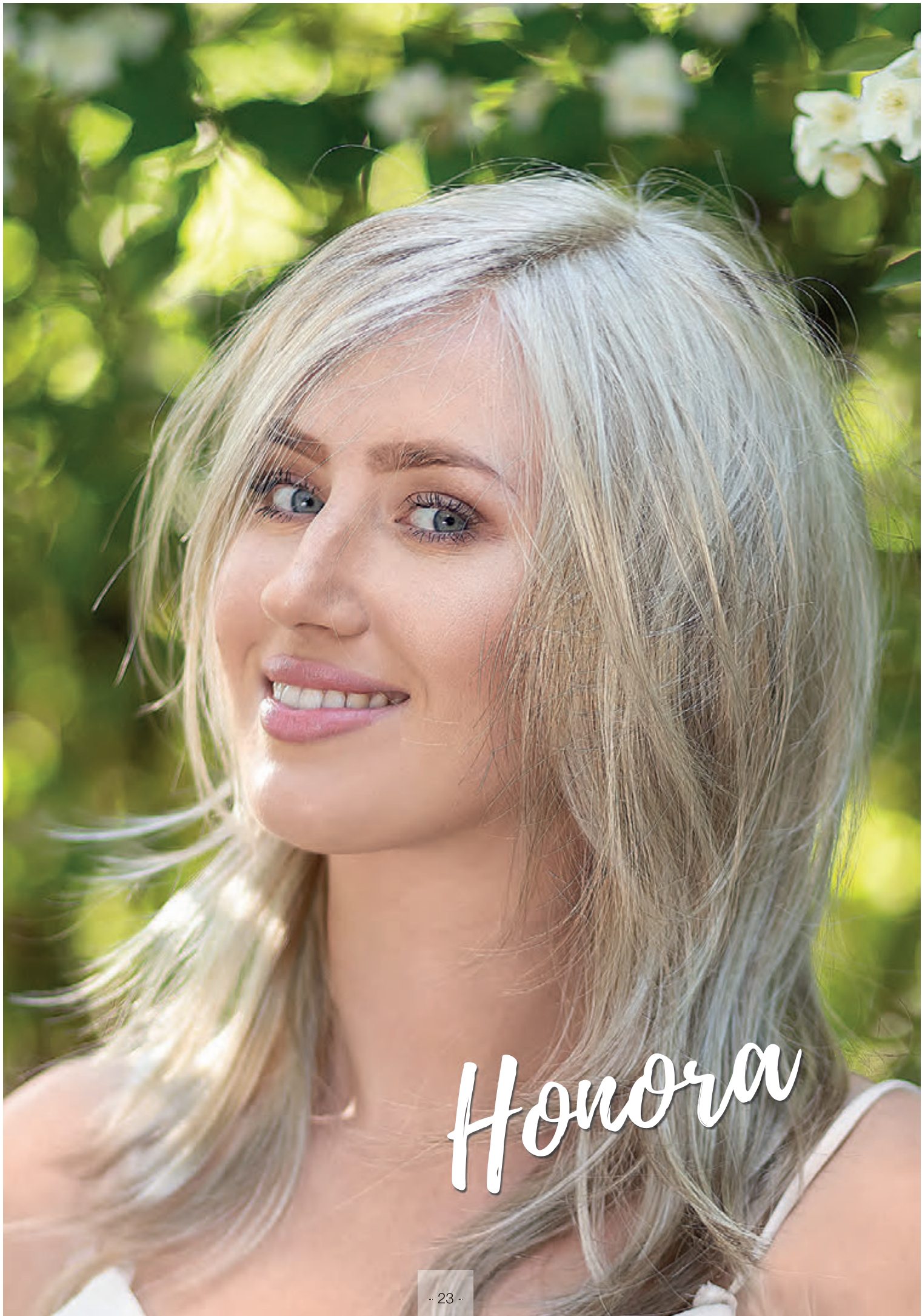
26/27/20

18/24/22

10/18/14

4/30/6R

4/6



Honora



Jackline

wefted

Colours:

24/25/23	26/27/20	18/22/12
14/12/22	8/16/30R	23N
23N/28/30/30R	130/31/4R	30/33
8/12/10	5/14/4R	4/30/6R
59	56	92

Jenifer

wefted

Colours:

26/25/22	26/27/20	18/22/12
14/12/22	12/14/16	131/137/4R
30/33	8/12/10	33/830
4/30/6R	59	56
55N		





Jocasta

mono part. lace front

Colours:

24/25/23	26/27/20	18/22/12
8/16/30R	27/30/31R	30/33
4/30/6R	4/6	

Layla

wifted

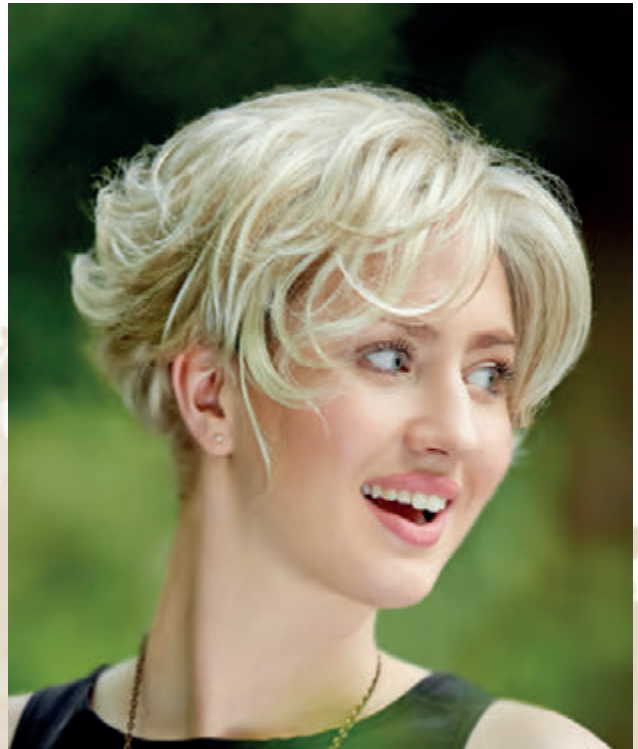
Colours:

26/27/20	18/22/12	12/14/16
32/133	30/33	8/12/10
4/8	56	51



A close-up portrait of a young woman with short, wavy, light blonde hair. She has bright blue eyes and is smiling warmly at the camera. She is wearing a dark, sleeveless top and a thin, gold chain necklace. The background is a soft, out-of-focus green, suggesting an outdoor setting. The name 'Libby' is written in a white, cursive font across the lower part of her chest.

Libby

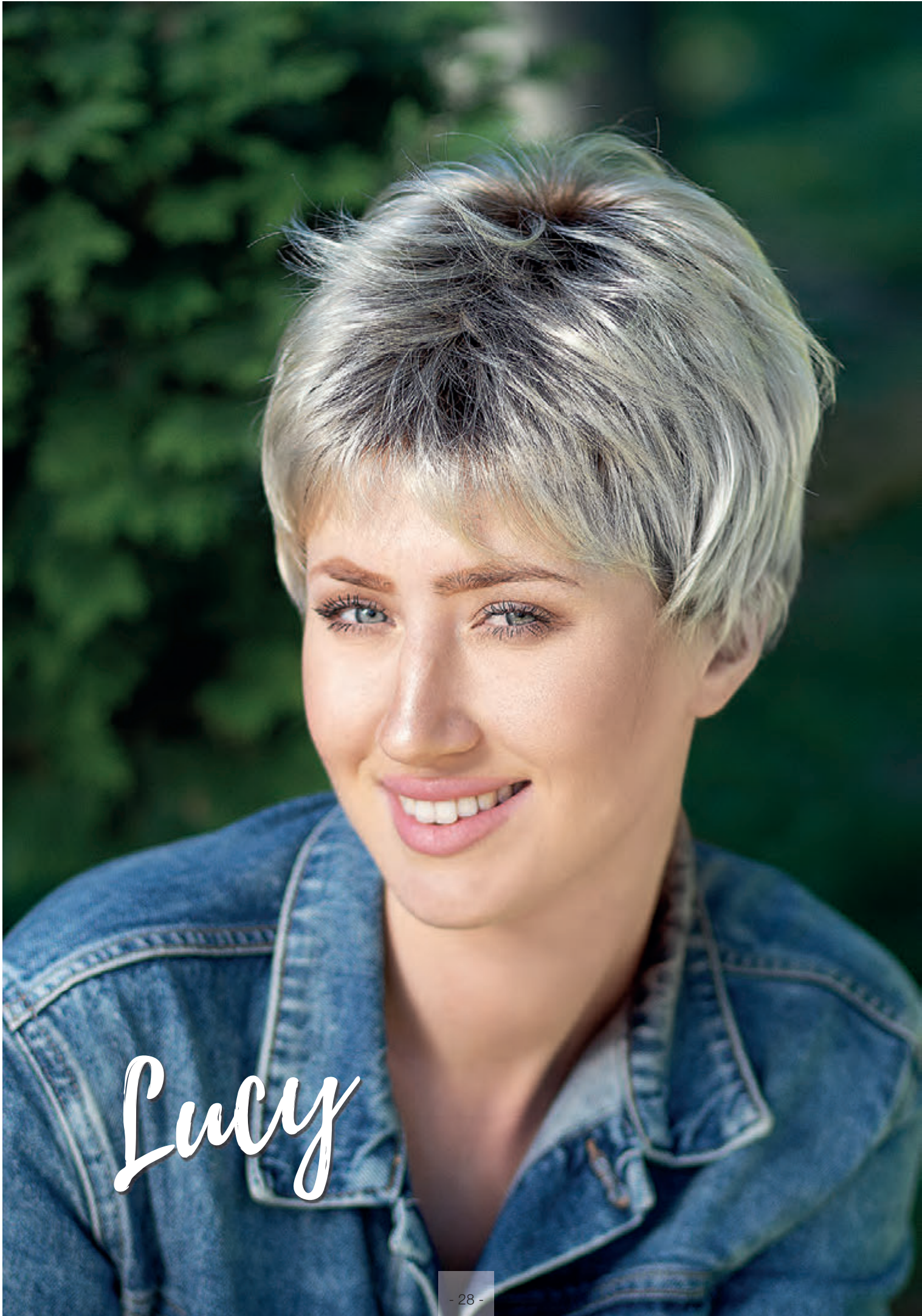


Libby

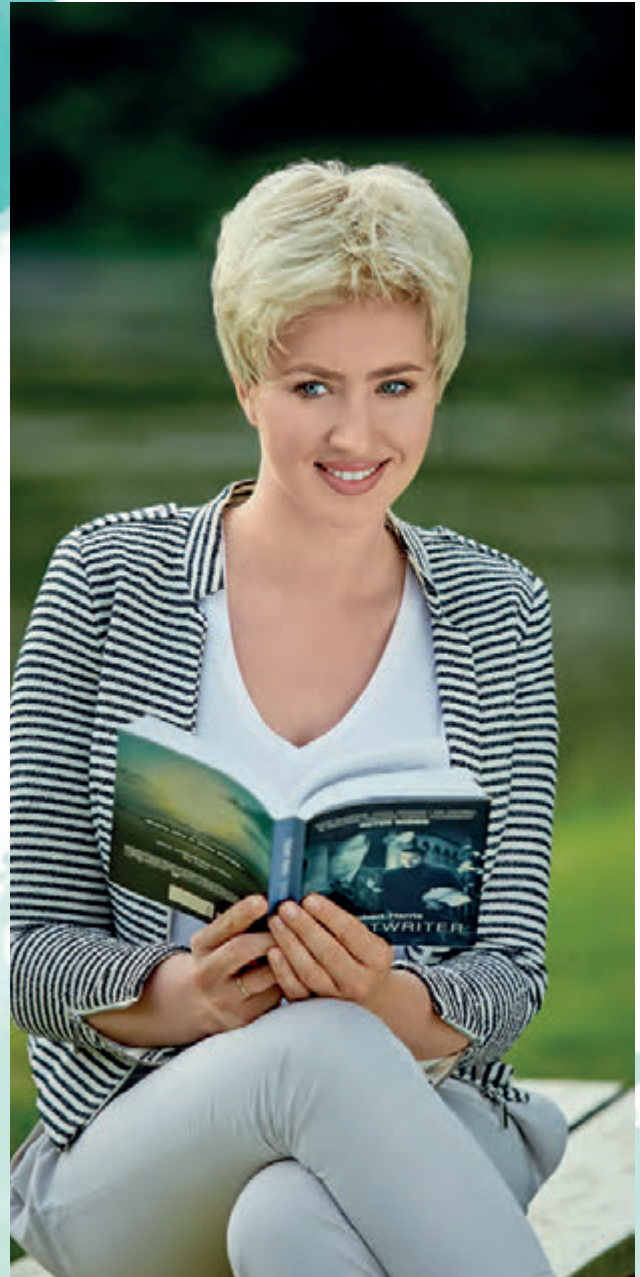
mono part, lace front

Colours:

101/24/38R	22/16	26/27/20	18/22/12	8/16/30R	130/31/4R	30/33
8/12/10	4/8	59				



Lucy



Lucy wefed

Colours:

24/25/23/12R	26/25/22	26/27/20
18/22/12	18/22/12/8R	18/22
14/12/22	12/14/16	8/16/30R
27/30/31R	23N	130/31/4R
32/133H	30/33	8/12/10
5/14/4R	4/30/6R	4/8
59	56	51
92		

Lucy plus mono crown, lace front

Colours:

24/25/23	26/25/22	26/27/20
18/22/12	14/12/22	12/14/16
8/16/30R	27/30/31R	23N
130/31/4R	32/133H	30/33
8/12/10	4/30/6R	4/6
1	59	56
51		



Poppy

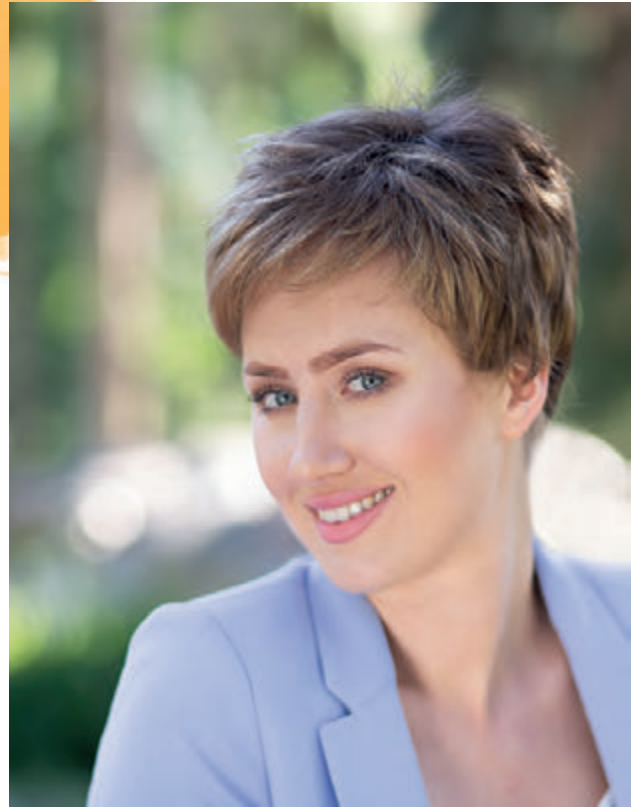


Poppy

mono part, lace front

Colours:

24/25/23	24/25/23/22R	26/27/20	18/22/12	18/24/22	32/133H	30/33
8/12/10	4/8					



Millie

mono part, lace front

Colours:

101/24/38R	22/16	26/27/20	18/24/22	14/12/22	23N/28/30/30R	8/12/10
8/27	4/6	38/48/36	56			



millie



Sally



Sally

mono part, lace front

Colours:

24/25/23/12R	22/16	26/27/20	18/22	14/12/22	32/133H	8/12/10
4/30/6R	4/6					



Maissa

mono crown, lace front

Colours:

24/25/23	24/25/23/12R	26/25/22
26/27/20	18/22/12	8/16/30R
32/133H	8/12/10	33/830
4/8		

Montgomery

mono crown

Colours:

24/25/23	22/16	26/25/22
18/22	14/12/22	12/14/16
8/16/30R	10/18/14	23N
23N/28/30/30R	130/31/4R	33/830
4/6		





Ruby

mono crown

Colours:

26/25/22	26/27/20	18/22/12
14/12/22	12/14/16	8/16/30R
27/30/31R	23N	130/31/4R
32/133H	30/33	8/12/10
4/30/6R	4/8	59
56	51	92

Victorine

mono part, lace front

Colours:

24/25/23	26/25/22	8/16/30R
130/31/4 R	32/133H	8/12/10
4/8	1	





Jamsin



Tamsin

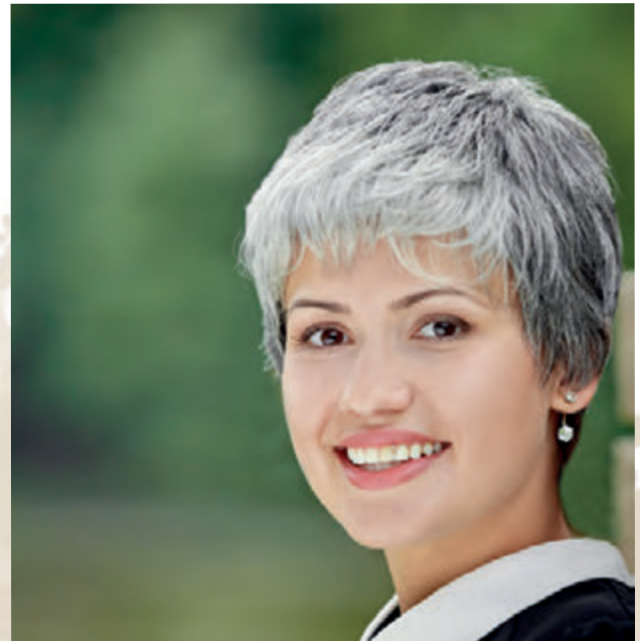
mono part, lace front

Colours:

24/25/23	24/25/23/12R	26/25/22	18/22/12	12/14/16	8/16/30R	32/133H
30/33	8/12/10	4/6	1			



Jilly



Tilly

mono crown

Colours:

24/25/23	26/25/22	14/12/22
12/14/16	23N	30/33
8/12/10	4/8	59
92		

Tilly plus

mono crown, lace front

Colours:

24/25/23	24/25/23/12R	26/25/22
18/24/22	14/12/22	12/14/16
23N	30/33	8/12/10
4/8	59	92



Lottie

mono part, lace front

Colours:

101/24/38R

R14/88/8R

18/24/22

23N/28/30/30R

8/12/10

4/6



Lottie



Jany

hair piece, mono part, lace front

Colours:

24/25/23/22R

26/27/20

18/24/22

10/18/14

8/12/10

4/8



Amy
hair piece, mono part, lace front

Colours:

24/25/23/22R

18/24/22

14/12/22

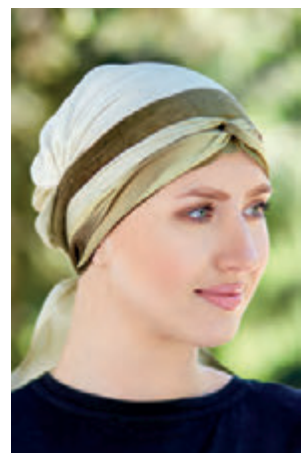
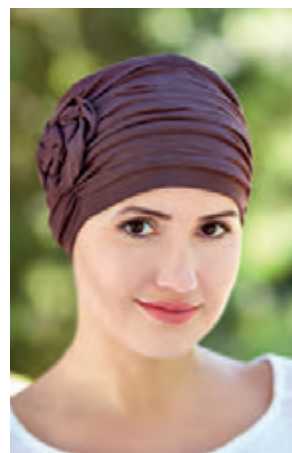
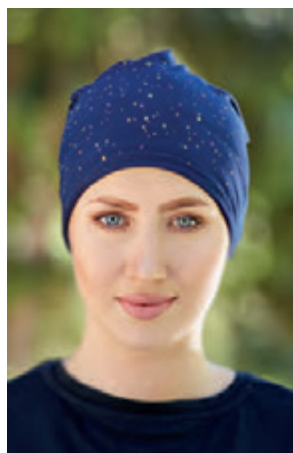
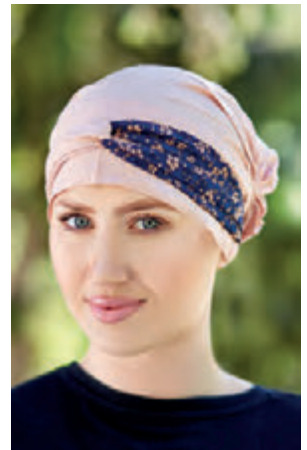
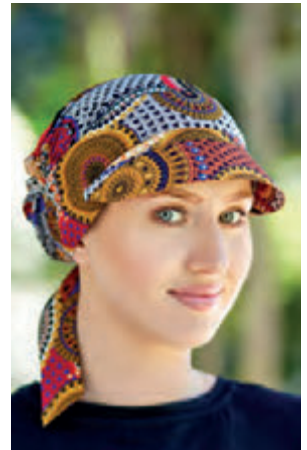
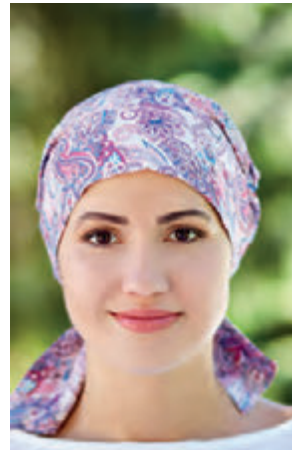
8/12/10

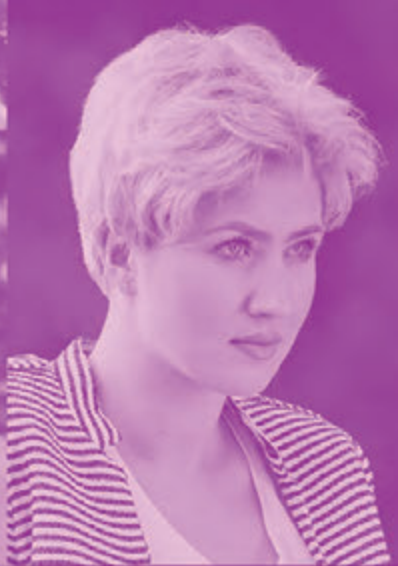
4/8

38/48/36

Turbans

Next to the variety of models of synthetic hair wigs, we also offer selection of turbans. Some models presented below. For more please contact us!





ROKOKO
ROKOKO
HAIR COMPANY

Rokoko Hair Company
rokoko@rokoko.com.pl
www.rokoko.com.pl