



Bloom

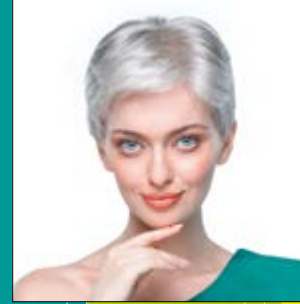
HAIR

Synthetic wigs collection

Bloom
HAIR



Contents



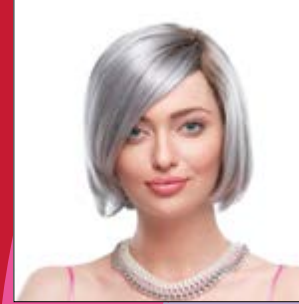
Abelia 6



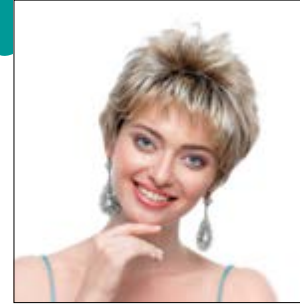
Ash 8



Epi 10



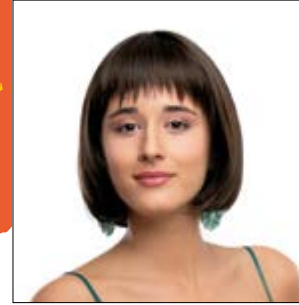
Holly 12



Host 14



Lavender 16



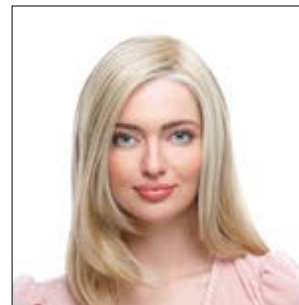
Malva 18



Marigold 20

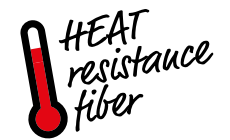


Persley 22



Rue 24

Some of the models are Heat Resistant. The fiber is synthetic hair that is made to withstand heat. You can curl or wave this hair using heat up to 130 degrees Celsius.



Colours

• Bloom Collection •

Please note

We make every effort to ensure that the samples and hair colors look like they really are. However, due to printing techniques, colors may vary from real ones.



59



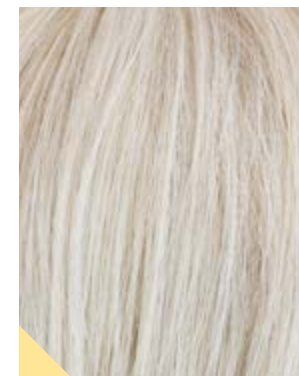
305K



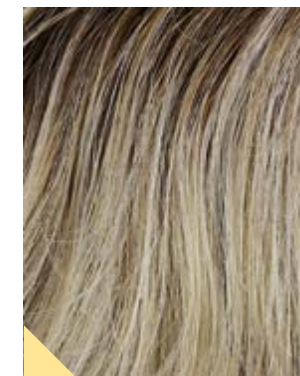
66/101/8R



51/56/60/1BR



101/60



101/24/38R



22/16



16/22/23/8R



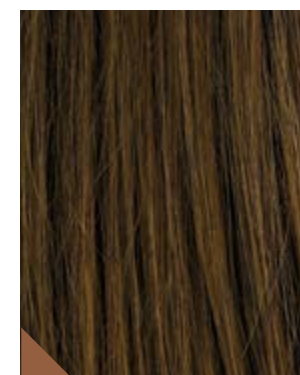
18/24/22



R14/88/8R



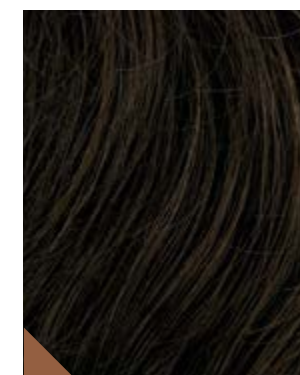
14/16/6R



5/14/4R



6/8/4R



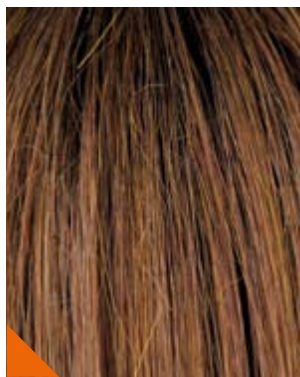
4/8



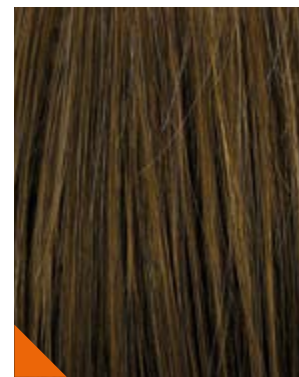
4/6



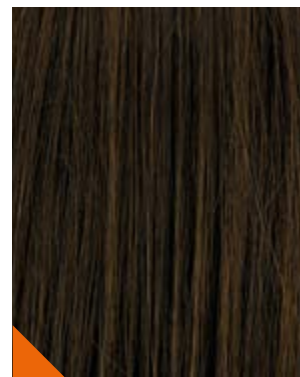
R2



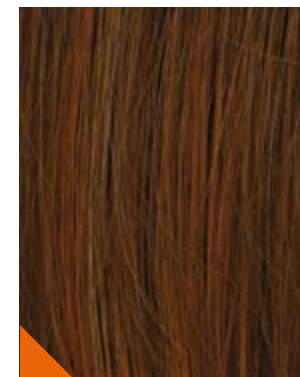
6/12/19/6R



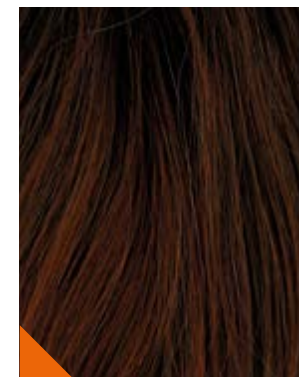
830/131/14



6/30/8/6R



23N/28/30/30R



130/31/4R



5

Abelia

Bloom Collection

lace front / mono top



Abelia colours:

- 305K
- 101/60
- 22/16
- 18/24/22
- R14/88/8R
- 6/8/4R
- 830/131/14



Abelia

7

Ash

Bloom Collection

HEAT
resistance
fiber

lace front / mono part



Ash colours:

- 101/24/38R
- 14/16/6R
- R14/88/8R
- R2
- 830/131/14
- 6/30/8/6R



Ash

9

Epi

Bloom Collection

lace front / mono part



Epi colours:

- 101/24/38R
- 22/16
- 16/22/23/8R
- 14/16/6R
- 5/14/4R
- 4/6
- 130/31/4R



Epi

Holly

Bloom Collection

lace front / mono part



Holly colours:

- 59
- 66/101/8R
- 22/16
- 16/22/23/8R
- 18/24/22
- 14/16/6R
- 6/8/4R
- R2
- 6/12/19/6R
- 830/131/14
- 23N/28/30/30R



Holly



Host

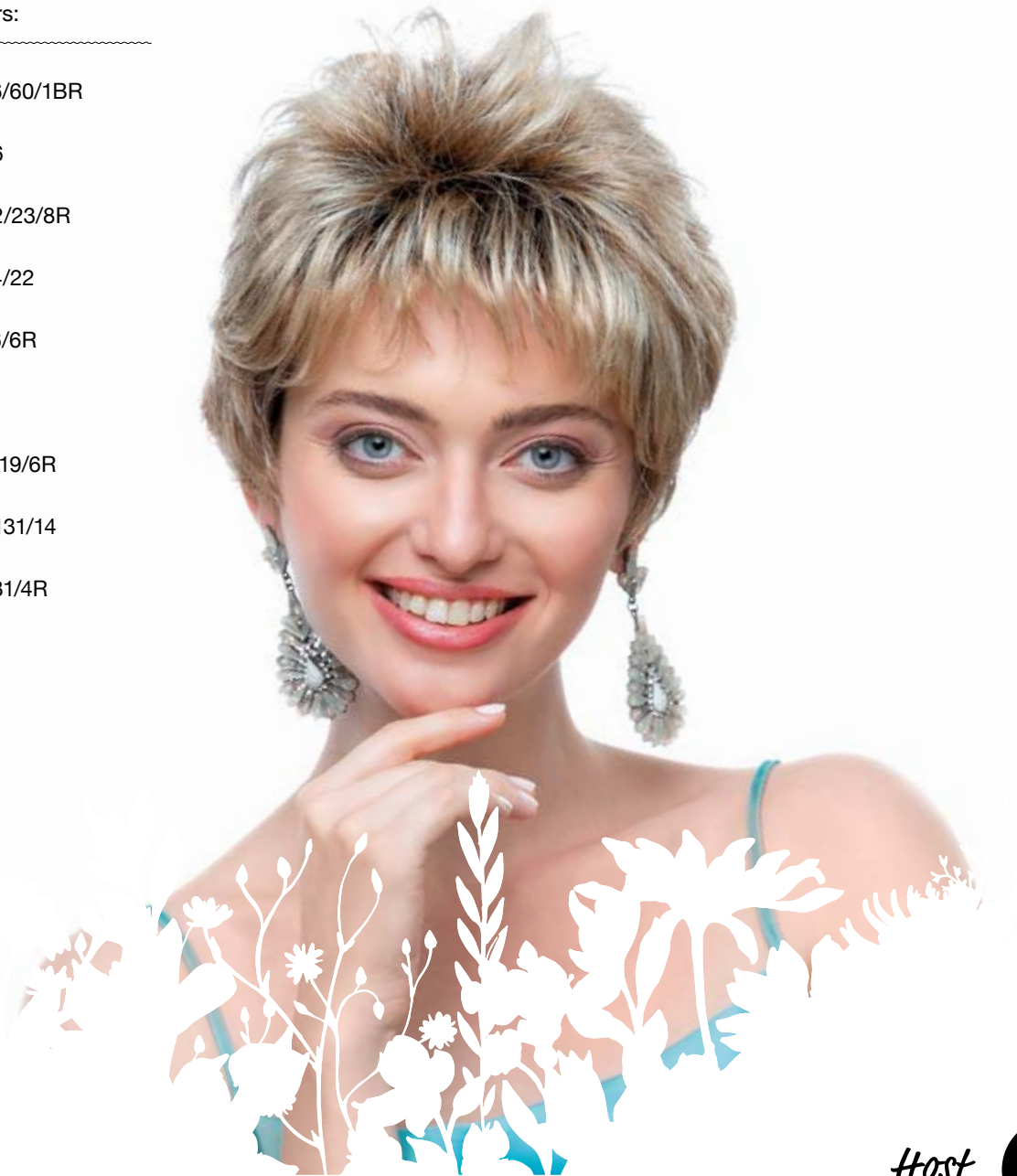
Bloom Collection

mono crown



Host colours:

- 51/56/60/1BR
- 22/16
- 16/22/23/8R
- 18/24/22
- 14/16/6R
- 4/6
- 6/12/19/6R
- 830/131/14
- 130/31/4R



Host

15

Lavender

Bloom Collection

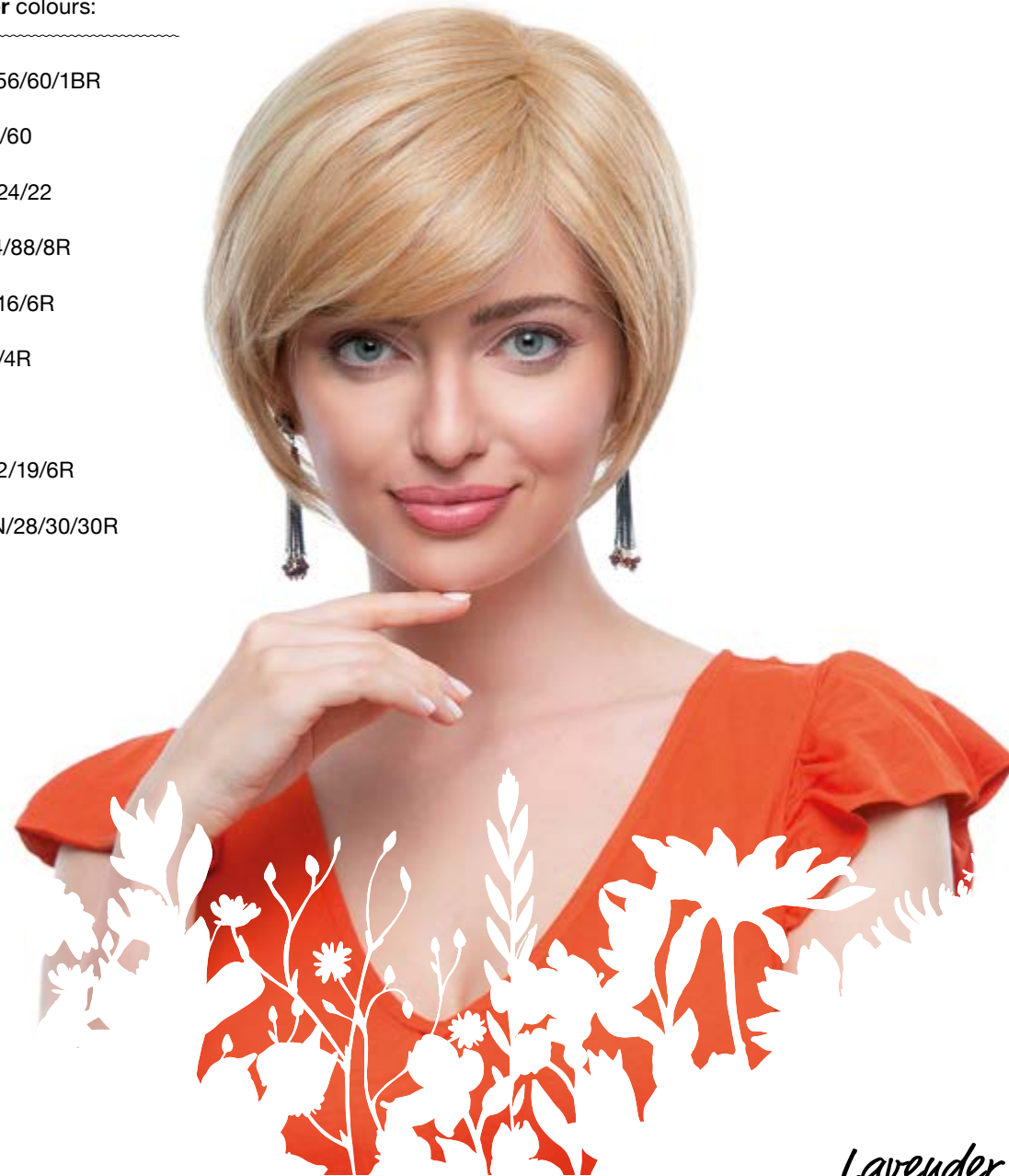


lace front / mono part



Lavender colours:

- 51/56/60/1BR
- 101/60
- 18/24/22
- R14/88/8R
- 14/16/6R
- 6/8/4R
- R2
- 6/12/19/6R
- 23N/28/30/30R



Lavender

Malwa

Bloom Collection

mono crown



Malva colours:

- 51/56/60/1BR
- 22/16
- 16/22/23/8R
- 14/16/6R
- 6/8/4R
- 4/8
- 130/31/4R



Malwa

19

Marigold

Bloom Collection



wufted



Marigold colours:

- 305K
- 101/24/38R
- 22/16
- 16/22/23/8R
- 14/16/6R
- R2
- 6/30/8/6R
- 23N/28/30/30R



Marigold

Persley

Bloom Collection

lace front / mono top



Persley colours:

- 305K
- 101/60
- 101/24/38R
- 22/16
- 18/24/22
- R14/88/8R
- 14/16/6R
- 5/14/4R
- 4/8
- 6/12/19/6R
- 6/30/8/6R
- 130/31/4R



Rue

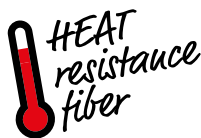
Bloom Collection

base size
16x15cm



16

toupee lace front / mono top

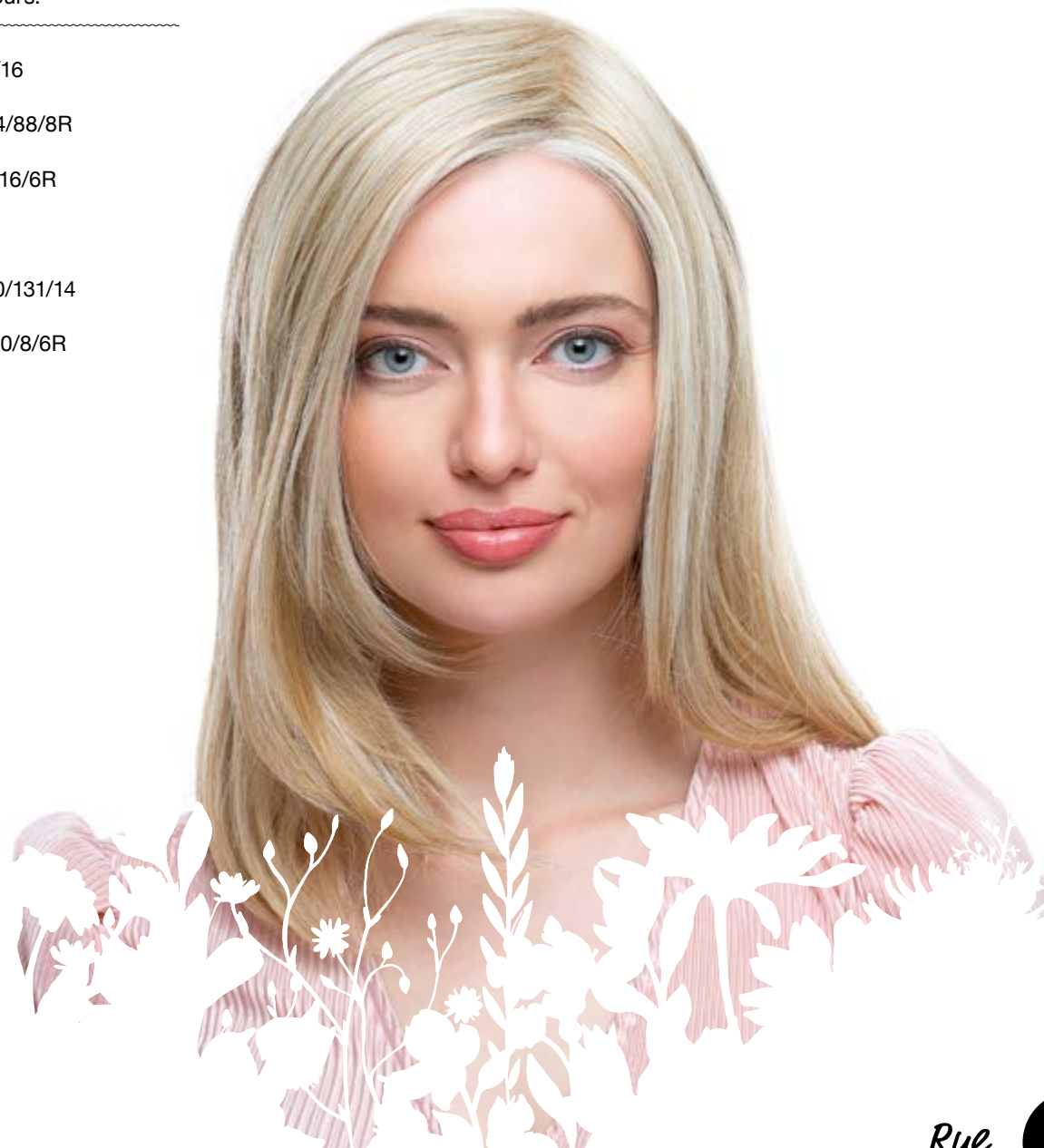


24



Rue colours:

- 22/16
- R14/88/8R
- 14/16/6R
- R2
- 830/131/14
- 6/30/8/6R



Rue

25

Contents

Colours.....	4
Abelia	6
Ash	8
Epi	10
Holly	12
Host.....	14
Lavender	16
Malva.....	18
Marigold	20
Persley.....	22
Rue	24



Bloom
HAIR





Bloom
HAIR

Synthetic wigs collection

ROKO
HAIR COMPANY

www.rokoko.com.pl