

www.ellen-wille.de



ellen wille
the wigs you love



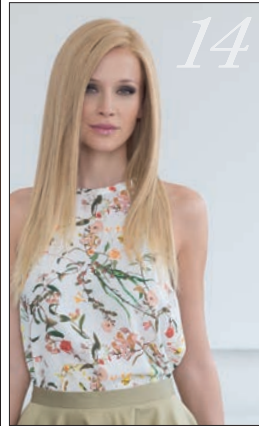
*pure!*power
the human hair collection by ellen wille



ellen wille
the wigs you love



8



14



26

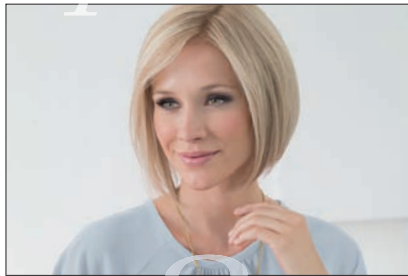


6



20

pure! power



4



22

3



remy hair quality

a touch of luxury
finest remy
human hair

ellen wille model

delicate





ellen wille model

soul



*absolutely
adorable
beach waves*



ellen wille model

emotion



pure grace

*seductive
and beautiful*

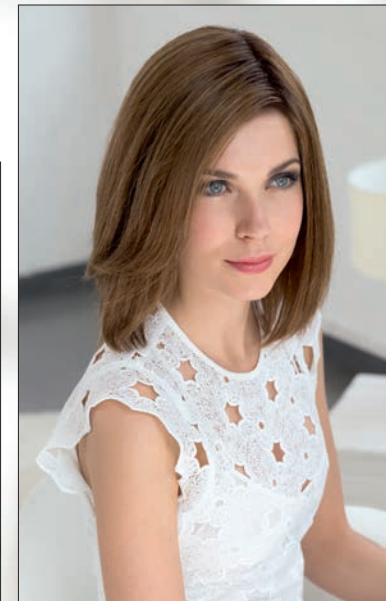




ellen wille model

trinity plus

*exclusive hair
for beautiful
styling possibilities*



*natural look
fantastic fit*



ellen wille model

***silk** hi*



ellen wille model
*brilliance
plus*



*the power of
personality*



*great length
soft and silky*



ellen wille model

obsession



ellen wille model

cascade new



*all about
beauty secrets*

pure moments





*impressive design
perfect comfort*

ellen wille model

award

sense and sensuality



ellen wille model

gloss

beautiful top pieces



Measurements: 13x8 cm | Hair length: 23 - 25 cm

ellen wille top piece

fill in



ellen wille top piece

top naturelle

*natural appeal
authentic style*



Measurements: 16x16 cm | Hair length: 11 - 13 cm

*with a perfect taste
of champagne
and chocolate*



Measurements: 23x27 cm | Hair length approx: 15 - 18 cm



ellen wille top piece

ideal

*comfort and elegance
a perfect match*



Measurements: 17 x 16 cm | Hair length: 40 cm



ellen wille top piece

matrix



award

page 18-19
espresso mix, **darkchocolate mix**,
lightcoffee rooted, chocolate mix,
lightmocca mix, bernstein mix,
sand mix, sandyblonde rooted,
champagne mix



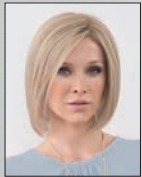
brilliance plus

page 12-13
espresso mix, darkchocolate mix,
chocolate mix, mocca rooted,
chestnut mix, bernstein mix,
sand mix, sandyblonde rooted,
champagne rooted



cascade new

page 16-17
espresso mix, darkchocolate mix,
chocolate mix, hazelnut mix,
mocca rooted, chestnut mix, bernstein mix,
natureblonde mix, champagne rooted,
lightchampagne rooted



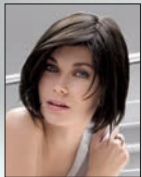
delicate

page 3
espresso mix, darkchocolate mix,
chocolate mix, hazelnut mix,
bernstein mix, natureblonde mix,
champagne rooted



emotion

page 6-7
espresso mix, **darkchocolate mix**,
chocolate mix, chestnut mix,
bernstein mix, natureblonde mix,
sandyblonde rooted, champagne rooted



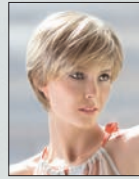
gloss

page 20-21
espresso mix, darkchocolate mix,
chocolate mix, mocca rooted,
chestnut mix, sand mix,
natureblonde mix, sandyblonde rooted,
lightchampagne rooted



obsession

page 14-15
espresso mix, darkchocolate mix,
chocolate mix, bernstein mix,
natureblonde mix,
champagne rooted



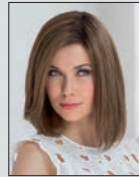
silk hi

page 10-11
espresso mix, darkchocolate mix,
chocolate mix, hazelnut mix,
mocca rooted, bernstein mix, sand mix,
sandyblonde rooted, champagne rooted



soul

page 4-5
espresso mix, darkchocolate mix,
chocolate mix, mocca mix,
bernstein mix, **natureblonde mix**,
champagne rooted, softcopper rooted



trinity plus

page 8-9
espresso mix, darkchocolate mix,
chocolate mix, **mocca rooted**,
bernstein mix, sandyblonde rooted,
champagne rooted, lightchampagne rooted,
chestnut mix, softcopper rooted



fill in

page 22-23
espresso mix, darkchocolate mix,
chocolate mix, mocca mix,
bernstein mix, sand mix,
sandyblonde rooted,
champagne rooted, smoke mix, snow mix



ideal

page 26-27
espresso mix, darkchocolate mix,
chocolate mix, hazelnut mix,
mocca mix, bernstein mix,
sand mix, sandyblonde rooted,
champagne mix



matrix

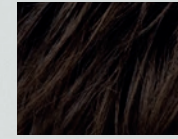
page 28-29
espresso mix, darkchocolate mix,
chocolate mix, mocca mix, chestnut mix,
sand mix, natureblonde mix,
sandyblonde rooted, **champagne rooted**,
lightchampagne rooted



top naturelle

page 24-25
espresso mix, darkchocolate mix,
chocolate mix, **mocca mix**,
sand mix, sandyblonde rooted,
champagne rooted

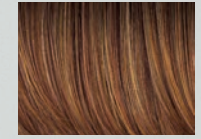
pure! power colours



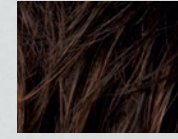
espresso mix 2.4



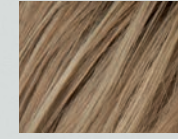
bernstein mix 12.830.26



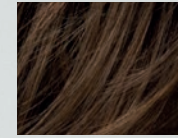
softcopper rooted 30.28.27



darkchocolate mix 6.33.4



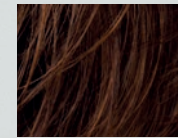
sand mix 14.26.12



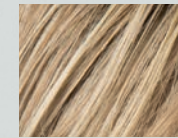
chocolate mix 6.30



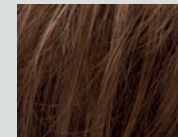
natureblonde mix 26.16.19



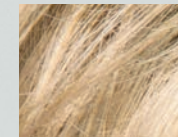
hazelnut mix 830.27.6



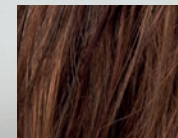
sandyblonde rooted 20.22.14



mocca mix 8.27.12



champagne mix 22.16.26

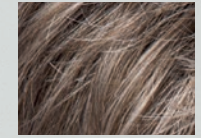


chestnut mix 33.30.6



lightchampagne rooted 25.23.22

Human Hair / New Futura Fiber:



smoke mix 48.38.36



snow mix 60.56.58

ellen wille top pieces



Mix: Fashionable colour combinations and highlights. **Rooted:** Natural root colours.
Remy hair quality: Remy Hair is high quality hair that is knotted in the direction of the individual hair's growth in a very complex finishing process.