



ellen  
wille  
THE HAIR YOU LOVE

# Top Power

BY ELLEN WILLE

# Top Power

BY ELLEN WILLE

**TOP DESIGN.  
TOP QUALITY.  
HAIR TOPPER!**

**De** Top Power ist Lust am Wandel und Spaß an Schönheit. Die neue Hair Topper Collection von ellen wille eröffnet unzählige Möglichkeiten. Neue Looks im Handumdrehen, mehr Volumen im Nullkommanichts. Ganz oben in Sachen Qualität, weit vorn in puncto Style. In jeder Hinsicht einfach top. Top Power.

**Es** Top Power representa el deseo de cambiar y el placer de la belleza. La nueva colección Hair Topper de ellen wille abre innumerables posibilidades. Nuevos Looks en un dos por tres así como más volumen en un instante. De calidad máxima, con un estilo muy vanguardista. ¡En todos los sentidos, simplemente genial! ¡Top power!

**It** Top Power è voglia di cambiare e di sentirsi belle divertendosi. La nuova collezione Hair Topper di ellen wille offre innumerevoli possibilità. Nuovi look in un batter d'occhio, più volume in un istante. In cima in termini di qualità, avanti in tema di stile. Semplicemente il top sotto ogni aspetto. Top Power.

**En** Top Power is passion for change and pleasure in beauty. The new Hair Topper collection from ellen wille offers countless possibilities. New looks in the blink of an eye, more volume in no time at all. Superior in terms of quality, ahead in regard to style. Top in every respect. Top power.

**Fr** Top Power représente l'envie de changement et le plaisir de la beauté. La nouvelle collection Hair Topper d'ellen wille offre de multiples variantes. De nouveaux looks en un tour de main, plus de volume en un rien de temps. Avec le meilleur de la qualité, avec un style en avance sur son temps. Simplement toujours au top. Top power.

**Ru** Top Power – это желание перемен и радость красоты. Новая коллекция Hair Topper от ellen wille открывает множество возможностей. Ваш новый имидж в мгновение ока – больше объема одним движением руки. На вершине с точки зрения качества, далеко впереди с точки зрения стиля. Великолепно во всех отношениях. Top Power.

☆☆☆☆  
Lace Top

SYNTHETIC HAIR



Size: 17 x 16 cm • Length: 10 - 12 cm

espresso mix • chocolate mix • nougat rooted • mocca rooted •  
**bernstein rooted** • caramel rooted • champagne rooted •  
stonegrey mix • silver mix



Lace  
Top

☆☆☆☆  
Top Mono

SYNTHETIC HAIR



Size: 17 x 16 cm • Length: 12 - 14 cm

espresso mix • chocolate mix • bernstein mix • sand mix • caramel mix •  
champagne mix • **smoke mix** • snow mix • silver mix

sh  
SYNTHETIC  
HAIR

Top  
Mono

☆☆☆☆  
Hanna

REMY HUMAN HAIR



Size: 14 x 19 cm • Length: 13 - 15 cm  
Base: PU material, can be trimmed

espresso mix • coffeebrown mix • chocolate mix • darknougat mix •  
sand mix • champagne mix •  
pepper mix • smoke mix • snow mix (grey percentage = high heat fiber)



Hanna

☆☆☆☆)

# Top Naturelle

REMY HUMAN HAIR



Size: 16 x 16 cm • Length: 10 – 13 cm

espresso mix • darkchocolate mix • chocolate mix • mocca mix •  
sand mix • sandyblonde rooted • champagne rooted



Top  
Naturelle



HUMAN  
HAIR

# Matrix

12





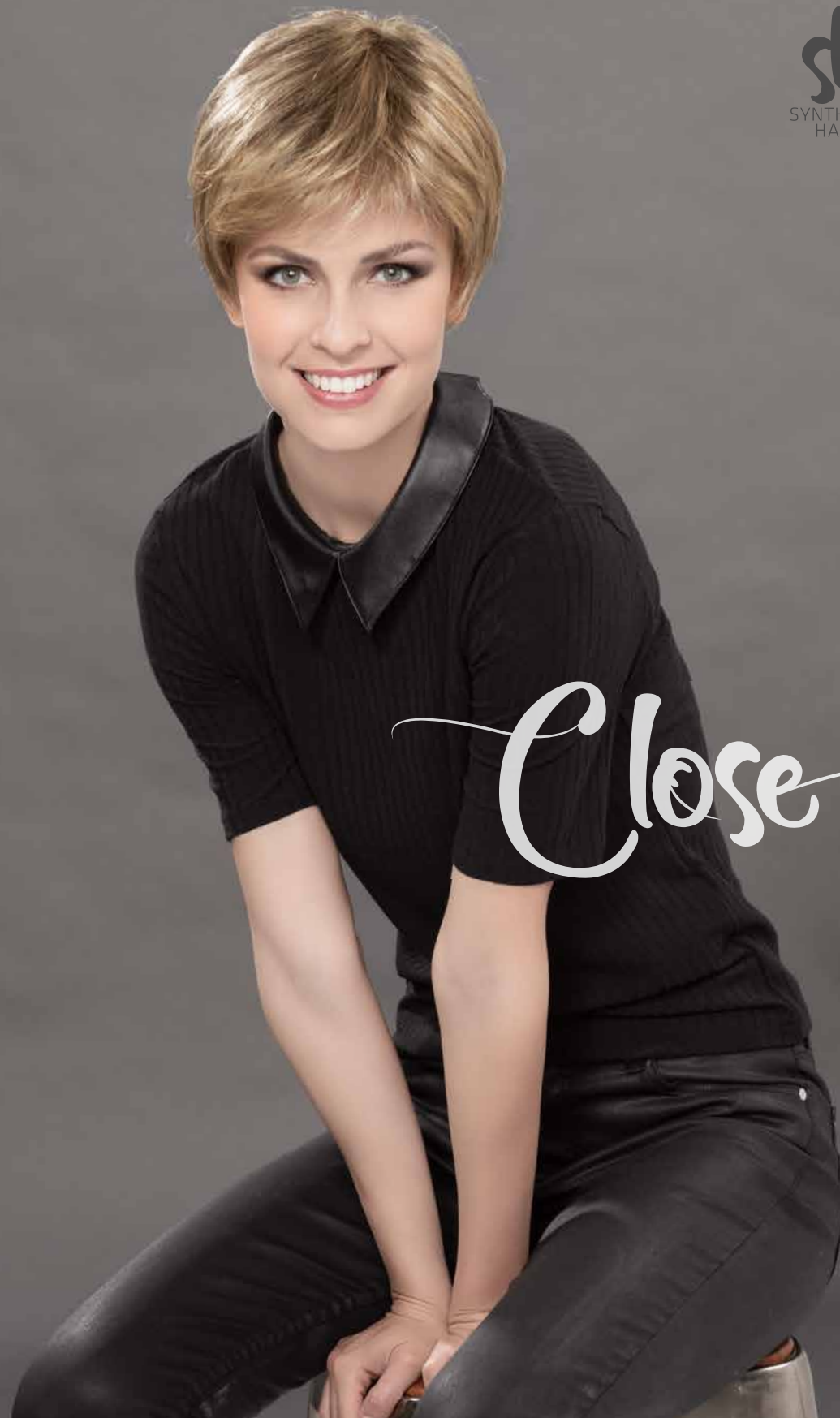
Close

SYNTHETIC HAIR



Size: 29 x 23 cm • Length: 9 - 10 cm

chocolate mix • mocca mix • bernstein mix • darksand mix •  
**sand mix** • champagne mix • salt/pepper mix • smoke mix • pearl mix • snow mix



Close



☆☆☆☆☆)

Ideal

REMY HUMAN HAIR



Size: 29 x 24 cm • Length: 9 - 14 cm

espresso mix • darkchocolate mix • chocolate mix • mocca mix •  
bernstein mix • sand mix • sandyblonde rooted • champagne rooted



Ideal

☆☆☆☆) **Real**

PRIME HAIR



Size: 13 x 16 cm • Length: 14 – 20 cm

espresso mix • darkchocolate mix • chocolate mix • mocca rooted •  
bernstein rooted • sand mix • **champagne rooted** •  
smoke mix • naturewhite mix

*Real*

☆☆☆☆)

# Just Nature

REMY HUMAN HAIR



Size: 13 x 8 cm • Length: 26 - 28 cm

darkespresso mix • darkchocolate mix • chocolate mix • mocca mix •  
bernstein mix • **sand mix** • sandyblonde rooted •  
champagne rooted



Just  
Nature



HUMAN  
HAIR

# Pleasure

22





Just

SYNTHETIC HAIR



Size: 8 x 14 cm • Length: 23 - 24 cm  
HIGH HEAT FIBER

espresso mix • darkchocolate mix • **chocolate mix** • mocca mix • bernstein rooted •  
sand mix • sandyblonde rooted • champagne mix • pearlblonde mix • silver mix



Just

☆☆☆☆)

# Fill In

REMY HUMAN HAIR



Size: 9 x 13 cm • Length: 24 - 32 cm

espresso mix • darkchocolate mix • chocolate mix • mocca mix • bernstein mix •  
sand mix • **sandyblonde rooted** • champagne rooted • lightchampagne mix



Fill In



# True

PRIME HAIR



Size: 16 x 7 cm • Length: 10 - 20 cm

espresso mix • darkchocolate mix • chocolate mix • mocca rooted •  
bernstein rooted • **sand mix** • champagne rooted



# True



# Ultra

PRIME HAIR



Size: 16 x 18 cm • Length: 18 - 24 cm

espresso mix • darkchocolate mix • chocolate mix • mocca mix • sand mix • **sandyblonde mix** • champagne rooted • lightchampagne mix • snow mix



# Ultra





HUMAN  
HAIR

# Ideal

32



☆☆☆☆☆))

# Fizz

SYNTHETIC HAIR



Size: 29 x 23 cm • Length: 17 - 28 cm

espresso mix • darkchocolate rooted • chocolate mix • mocca rooted •  
lightbernstein rooted • sand rooted • sandyblonde rooted • pastelblonde rooted •  
**lightchampagne rooted** • stonegrey rooted • silver mix

*Fizz*



☆☆☆☆☆  
Cometa

REMY HUMAN HAIR



Size: 13 x 17 cm • Length: 16 - 26 cm

espresso mix • **darkchocolate mix** • chocolate mix • mocca mix •  
lightbernstein mix • sandyblonde mix • champagne mix



Cometa

☆☆☆☆  
Vario

PRIME HAIR



Size: 13 x 16 cm • Length: 25 – 33 cm

espresso mix • darkchocolate mix • **chocolate mix** •  
mocca rooted • bernstein rooted • caramel mix • champagne rooted •  
lightchampagne mix • auburn rooted



Vario

☆☆☆☆☆  
Effect

SYNTHETIC HAIR

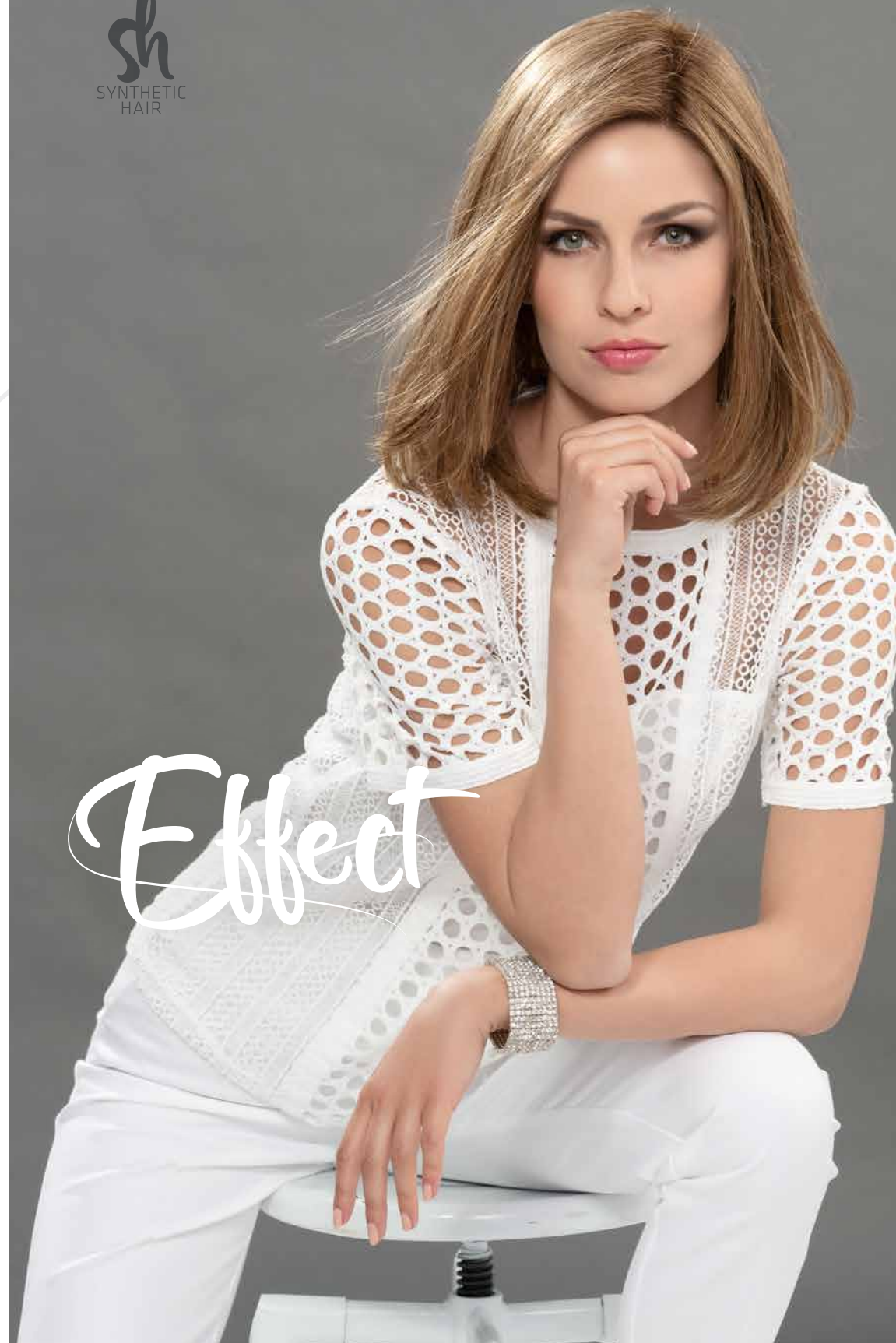


Size: 18 x 17 cm • Length: 18 – 29 cm  
HIGH HEAT FIBER

espresso mix • darkchocolate mix • chocolate mix •  
mocca rooted • **bernstein rooted** • caramel mix • sandyblonde rooted •  
darkauburn mix • pearlblonde rooted

sh  
SYNTHETIC  
HAIR

Effect





# Just Nature

☆☆☆☆)  
Famous

REMY HUMAN HAIR



Size: 15 x 17 cm • Length: 30 - 32 cm

espresso mix • darkchocolate mix • **chocolate mix** • nougat rooted • mocca mix •  
lightbernstein rooted • sandyblonde mix • champagne rooted

*Famous*

☆☆☆☆☆))

# Secret

SYNTHETIC HAIR



Size: 29 x 23 cm • Length: 28 – 38 cm

espresso mix • darkchocolate rooted • chocolate mix •  
mocca mix • bernstein rooted • sandyblonde rooted • **champagne rooted** •  
stonegrey rooted • silvergrey mix

Secret



☆☆☆☆)

# Matrix

REMY HUMAN HAIR



Size: 16 x 17 cm • Length: 32 - 40 cm

espresso mix • darkchocolate mix • chocolate mix • mocca mix • sand mix •  
sandyblonde rooted • champagne rooted



Matrix

☆☆☆☆☆  
Pleasure

REMY HUMAN HAIR



Size: 15 x 16 cm • Length: 40 - 43 cm

espresso mix • darkchocolate mix • chocolate mix • mocca mix •  
lightbernstein mix • sandyblonde mix • champagne rooted



Pleasure



# Top Naturelle

CUSTOMIZE  
YOUR

# Cuts



colour: sandyblonde

HAIR TOPPER  
**Ultra**  
Page 30

Die Top-Power-Modelle von ellen wille sind echte Verwandlungskünstler. Sie lassen sich ganz individuell nach persönlichen Vorlieben zuschneiden. Schicke Ponys, asymmetrische Konturen oder mehr Volumen. Bieten Sie Ihren Kundinnen den idealen Stil zu deren Lifestyle!

*The Top Power models from ellen wille provide true versatility. They can be individually adjusted to personal preferences. Trendy fringes, asymmetric silhouettes or more volume. Let your customers have the ideal style for their lifestyle!*



Fringy Bob



Beach Waves

## Flexible cuts

Experience the wide range of cuts.  
Endless possibilities.



Funky Hair



Asymmetric Style

# CUSTOMIZE YOUR Colours

Your own hair



56

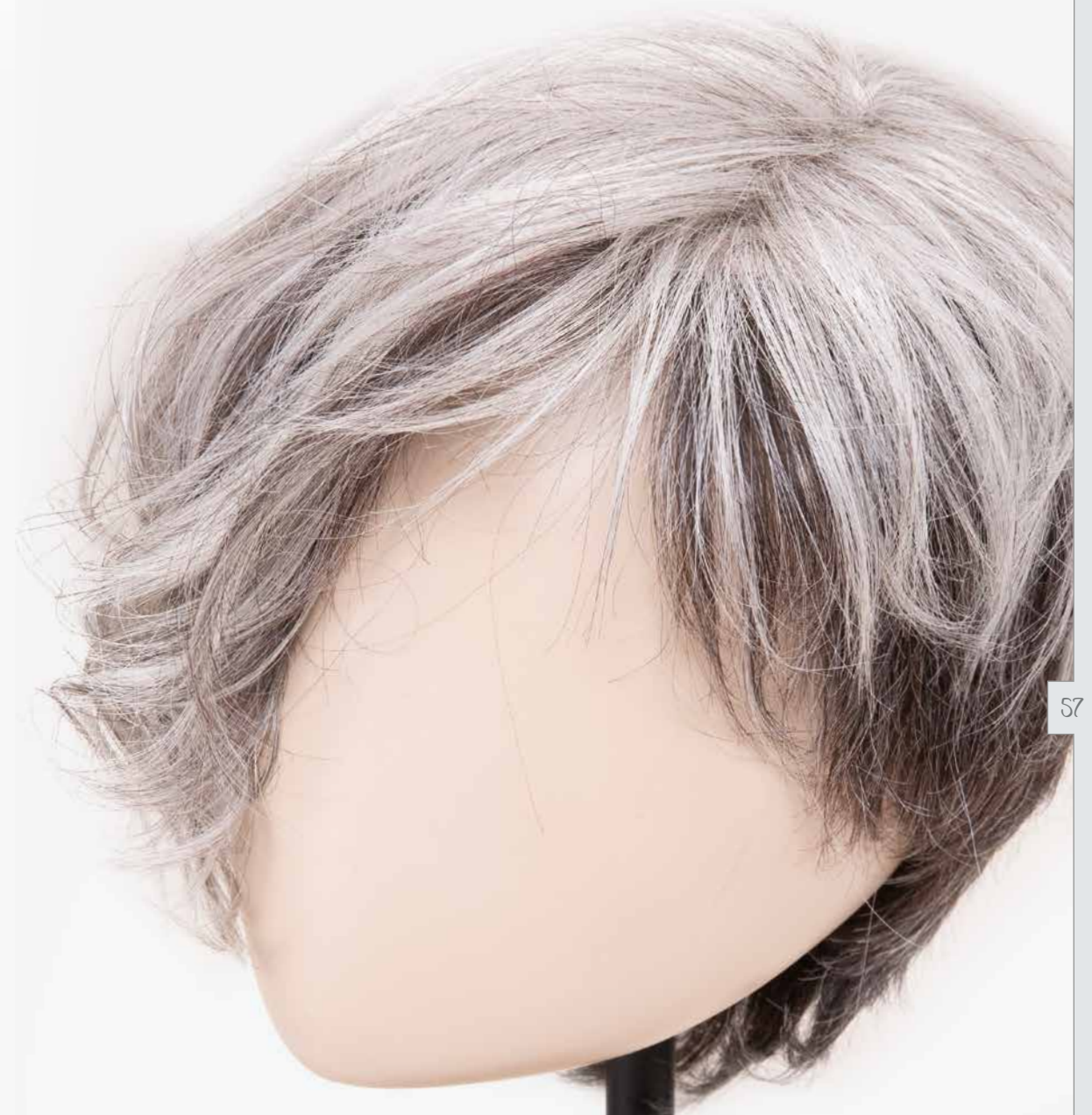


colour: silver

HAIR TOPPER  
**Just**  
Page 24

Unsere Hair Topper lassen Sie ganz individuelle Farbakzente setzen. Gefärbte Spitzen und getönte Strähnen. Harmonische Übergänge, spannende Kontraste und reizvolle Kombinationen mit Eigenhaar. Mit Top Power treffen Sie den richtigen Ton!

*Our hair toppers made of real hair let you set individual colour accents. Coloured tips and tinted strands. Harmonious transitions, exciting contrasts and charming combinations of topper and own hair. With Top Power you hit the right tone!*



57

## Mixed colours

Hair Topper combined with  
your own natural hair.

# CUSTOMIZE YOUR Curls

58

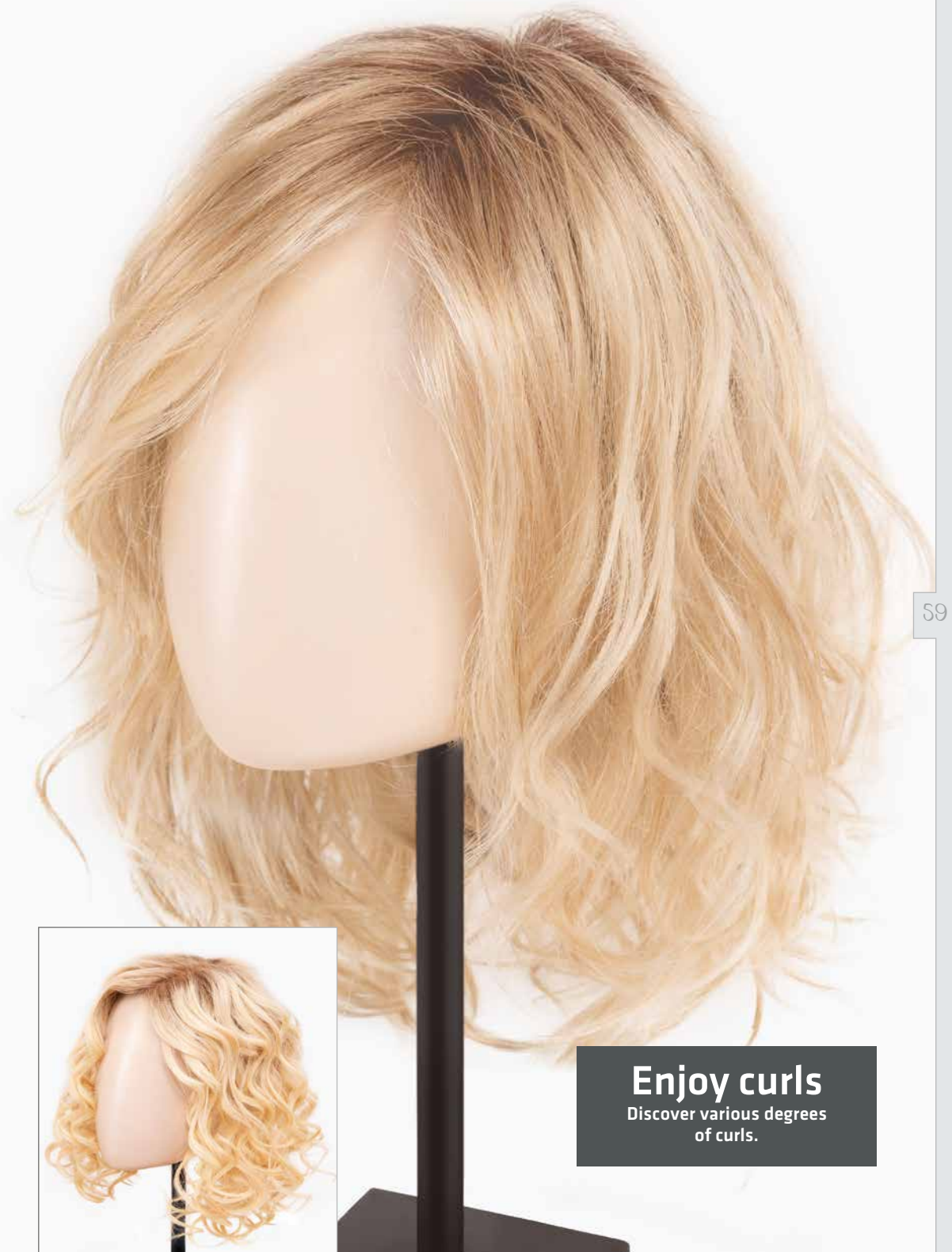
colour: champagne



HAIR TOPPER  
**Matrix**  
Page 48

Die ellen wille Hair Topper aus Echthaar und Prime Hair können mit Lockenwicklern, Glätteisen und Föhn gestylt werden. Von leichten Waves bis schicken Curls sind dadurch unterschiedliche Strukturen möglich. Erkunden Sie die ganze Vielfalt verlockender Looks!

*The ellen wille hair toppers made of human hair and Prime Hair can be styled with curlers, straightening irons and hair-dryers. From light waves to chic curls, different structures are possible. Explore the whole variety of enticing looks!*



59

**Enjoy curls**  
Discover various degrees  
of curls.

# Synthetic

## Synthetic Hair

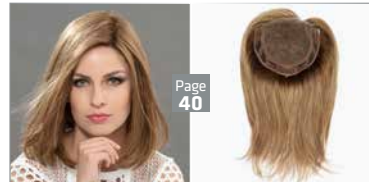


Page 14

Close ★★★★★  
SYNTHETIC HAIR

chocolate mix • mocca mix • bernstein mix • darksand mix • **sand mix** • champagne mix • salt/pepper mix • smoke mix • pearl mix • snow mix

Size: 29 x 23 cm • Length: 9 – 10 cm

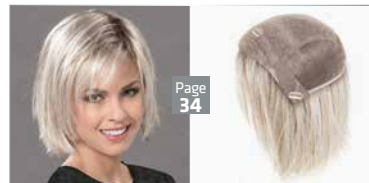


Page 40

Effect ★★★★★  
SYNTHETIC HAIR • HIGH HEAT FIBER

espresso mix • darkchocolate mix • chocolate mix • mocca rooted • **bernstein rooted** • caramel mix • sandyblonde rooted • darkauburn mix • pearlblonde rooted

Size: 18 x 17 cm • Length: 18 – 29 cm

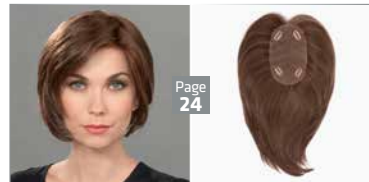


Page 34

Fizz ★★★★★  
SYNTHETIC HAIR

espresso mix • darkchocolate rooted • chocolate mix • mocca rooted • lightbernstein rooted • sand rooted • sandyblonde rooted • pastelblonde rooted • **lightchampagne rooted** • stonegrey rooted • silver mix

Size: 29 x 23 cm • Length: 17 – 28 cm

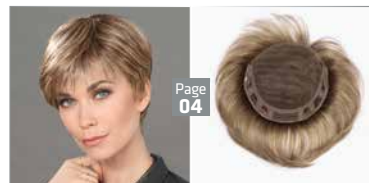


Page 24

Just ★★★★★  
SYNTHETIC HAIR • HIGH HEAT FIBER

espresso mix • darkchocolate mix • **chocolate mix** • mocca mix • bernstein rooted • sand mix • sandyblonde rooted • champagne mix • pearlblonde mix • silver mix

Size: 8 x 14 cm • Length: 23 – 24 cm

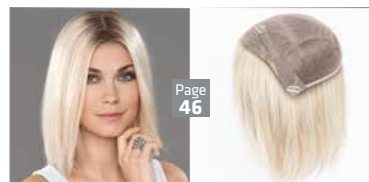


Page 04

Lace Top ★★★★★  
SYNTHETIC HAIR

espresso mix • chocolate mix • nougat rooted • mocca rooted • **bernstein rooted** • caramel rooted • champagne rooted • stonegrey mix • silver mix

Size: 17 x 16 cm • Length: 10 – 12 cm



Page 46

Secret ★★★★★  
SYNTHETIC HAIR

espresso mix • darkchocolate rooted • chocolate mix • mocca mix • bernstein rooted • sandyblonde rooted • **champagne rooted** • stonegrey rooted • silvergrey mix

Size: 29 x 23 cm • Length: 28 – 38 cm



Page 06

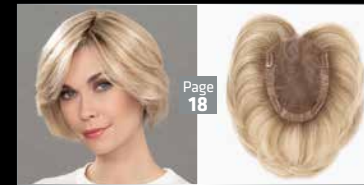
Top Mono ★★★★★  
SYNTHETIC HAIR

espresso mix • chocolate mix • bernstein mix • sand mix • caramel mix • champagne mix • **smoke mix** • snow mix • silver mix

Size: 17 x 16 cm • Length: 12 – 14 cm

# Prime

## Prime Hair



Page 18

Real ★★★★★  
PRIME HAIR

espresso mix • darkchocolate mix • chocolate mix • mocca rooted • bernstein rooted • sand mix • **champagne rooted** • smoke mix • naturewhite mix

Size: 13 x 16 cm • Length: 14 – 20 cm

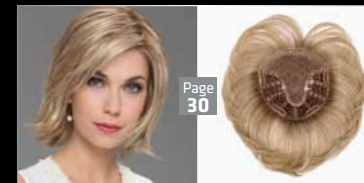


Page 28

True ★★★★★  
PRIME HAIR

espresso mix • darkchocolate mix • chocolate mix • mocca rooted • bernstein rooted • **sand mix** • champagne rooted

Size: 16 x 7 cm • Length: 10 – 20 cm



Page 30

Ultra ★★★★★  
PRIME HAIR

espresso mix • darkchocolate mix • chocolate mix • mocca mix • sand mix • **sandyblonde mix** • champagne rooted • lightchampagne mix • snow mix

Size: 16 x 18 cm • Length: 18 – 24 cm



Page 38

Vario ★★★★★  
PRIME HAIR

espresso mix • darkchocolate mix • **chocolate mix** • mocca rooted • bernstein rooted • caramel mix • champagne rooted • lightchampagne mix • auburn rooted

Size: 13 x 16 cm • Length: 25 – 33 cm

## Human Hair



Page 44

### Famous ☆☆☆☆)

REMY HUMAN HAIR

espresso mix • darkchocolate mix • **chocolate mix** • nougat rooted • mocca mix • lightbernstein rooted • sandyblonde mix • champagne rooted

Size: 15 x 17 cm • Length: 30 – 32 cm



Page 26

### Fill In ☆☆☆☆)

REMY HUMAN HAIR

espresso mix • darkchocolate mix • chocolate mix • mocca mix • bernstein mix • sand mix • **sandyblonde rooted** • champagne rooted • lightchampagne mix

Size: 9 x 13 cm • Length: 24 – 32 cm



Page 08

### Hanna ☆☆☆☆)

REMY HUMAN HAIR

espresso mix • coffeebrown mix • chocolate mix • darknougat mix • sand mix • **champagne mix** • pepper mix • smoke mix • snow mix (grey percentage = high heat fiber)

Size: 14 x 19 cm • Length: 13 – 15 cm



Page 16

### Ideal ☆☆☆☆)

REMY HUMAN HAIR

espresso mix • darkchocolate mix • chocolate mix • mocca mix • bernstein mix • sand mix • sandyblonde rooted • **champagne rooted**

Size: 29 x 24 cm • Length: 9 – 14 cm



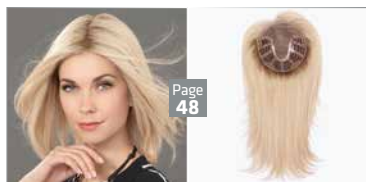
Page 20

### Just Nature ☆☆☆☆)

REMY HUMAN HAIR

darkespresso mix • darkchocolate mix • chocolate mix • mocca mix • bernstein mix • **sand mix** • sandyblonde rooted • champagne rooted

Size: 13 x 8 cm • Length: 26 – 28 cm



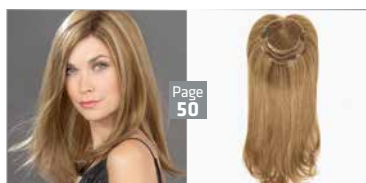
Page 48

### Matrix ☆☆☆☆)

REMY HUMAN HAIR

espresso mix • darkchocolate mix • chocolate mix • mocca mix • sand mix • sandyblonde rooted • **champagne rooted**

Size: 16 x 17 cm • Length: 32 – 40 cm



Page 50

### Pleasure ☆☆☆☆)

REMY HUMAN HAIR

espresso mix • darkchocolate mix • chocolate mix • mocca mix • **lightbernstein mix** • sandyblonde mix • champagne rooted

Size: 15 x 16 cm • Length: 40 – 43 cm



Page 10

### Top Naturelle ☆☆☆☆)

REMY HUMAN HAIR

espresso mix • darkchocolate mix • chocolate mix • mocca mix • **sand mix** • sandyblonde rooted • champagne rooted

Size: 16 x 16 cm • Length: 10 – 13 cm

## European Human Hair

EUROPEAN HUMAN HAIR



Page 36

### Cometa ☆☆☆☆)

EUROPEAN HUMAN HAIR

espresso mix • **darkchocolate mix** • chocolate mix • mocca mix • lightbernstein mix • sandyblonde mix • champagne mix

Size: 13 x 17 cm • Length: 16 – 26 cm

# Quality

☆☆☆☆

Monofilament + Tresse  
Monofilament + wefted  
Monofilament + tresses  
Monofilamento + lavorata a macchina  
Monofilamento + tejida a máquina  
Монофиламент + трессы

☆☆☆☆☆

100 % handgeknüpft  
100 % handmade  
100 % fait main  
100 % fatta a mano  
100 % anudada a mano  
100 % ручная работа

)

Filmansatz  
Lace front  
Bordure invisible  
Tulle Cinema  
Tul frontal  
Невидимая фронтальная линия

)

Erweiterter Filmansatz  
Extended Lace front  
Bordure invisible extra-longue  
Tulle Cinema prolungato  
Tul frontal alargado  
Удлиненная фронтальная линия

mix

Modische Farbmischung und Strähnung  
Fashionable colour blend and high/lowlights  
Effet méché dans des coloris tendance  
Miscela di tonalità diverse alla moda  
Mezcla de colores y mechas de moda  
Модный микс цветов и мелирование

rooted

Natürliche Ansatzfarbgebung  
Naturally rooted colours  
Effet racine dans un ton plus foncé  
Effetto ricrescta: la base delle meche è scura  
Raíz naturalmente más oscura  
Эффект отросших корней





**De** Kunsthaar ist pflegeleicht und sieht natürlich aus. Neue Looks im Handumdrehen. Neben klassischem Synthetikhaar, finden Sie bei uns Modelle aus vielseitiger, hitzeresistenter High-Heat-Faser. Unsere Hair Topper aus Kunsthaar sind unkomplizierte „ready-to-wear“-Lösungen für mehr Volumen.

**En** Synthetic hair is easy to care for and looks natural. New styles in the blink of an eye. In addition to classic synthetic hair, you will find models made of versatile heat-resistant high-heat fibre. Our synthetic hair toppers are uncomplicated ready-to-wear solutions for more volume.



**De** Prime Hair ist ein innovativer Mix aus hitzeresistenten Synthetikfasern und hochwertigem Echthaar. Der revolutionäre Mix vereint die Vorteile von Echt- und Kunsthaar. Unsere Hair Topper aus Prime Hair sind in einer großen Farbauswahl erhältlich, darunter auch Grautöne, und lassen sich individuell stylen. Unsere Prime-Modelle verwandeln Innovation in Inspiration.

**En** Prime Hair is an innovative mix of heat-resistant synthetic fibres and high-quality human hair. The revolutionary mix combines the advantages of both hair types. Our hair toppers of Prime Hair are available in a wide range of colours, including shades of grey, and can be individually styled. Our Prime models turn innovation into inspiration.



**De** Die meisten unserer Hair Topper bestehen aus Echthaar. Sie verfügen über natürlichen Glanz, sind seideweich und ergänzen eigenes Haar ideal. Sie lassen sich föhnen und mit dem Glätteisen stylen. Für die Top Power Echthaarmodelle verwenden wir ausschließlich bestes Remy Human Hair. Unsere Hair Topper sind wahr gewordene Echthaarträume.

**En** Most of our hair toppers are made of human hair. They have a natural shine, are silky soft and complement the natural hair ideally. You can blow dry it and style it with the straightening iron. We only use the best Remy Human Hair for the Top Power models. Our hair toppers are human hair dreams come true.

# Colours



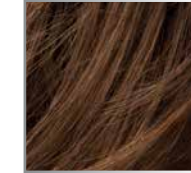
espresso  
4.6.2



darkchocolate  
6.33.4



coffeebrown  
8.6



chocolate  
8.30.6



nougat  
12.8.20



mocca  
8.30.27.12



bernstein  
12.26.19



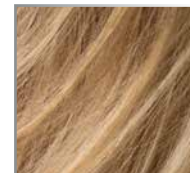
lightbernstein  
12.26.27



darksand  
12.20.22



sand  
14.26.20



caramel  
20.26.14



sandyblonde  
16.22.14



champagne  
22.16.25



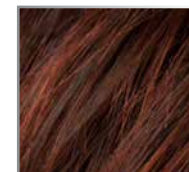
pastelblonde  
25.23.22



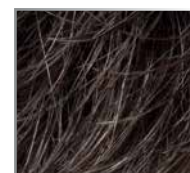
lightchampagne  
23.22.24



darkauburn  
33.130.2



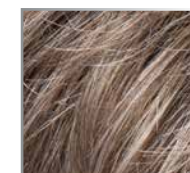
auburn  
33.130.4



pepper  
39.44



salt/pepper  
39.51.60



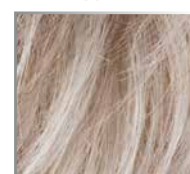
smoke  
48.38.36



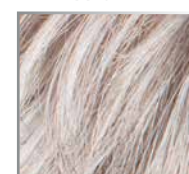
stonegrey  
48.51.60



pearlblonde  
101.20.25



pearl  
101.14



snow  
60.56.58



silver  
60.56



naturewhite  
60.101

# Top Power

BY ELLEN WILLE

  
ellen  
wille  

---

THE HAIR YOU LOVE

